

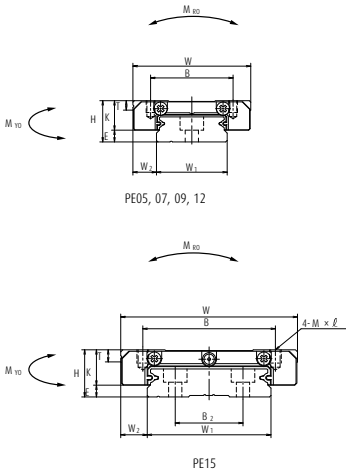
**9. Dimensions**

PE-AR, TR (Standard type / Standard)

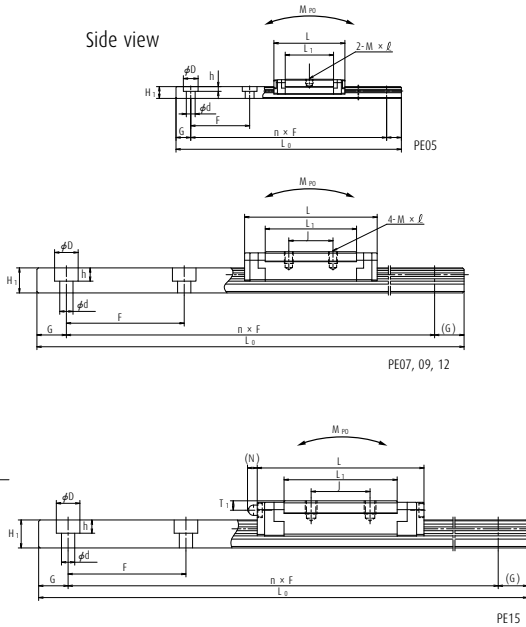
PE-UR, BR (High-load type / Long)

|   |    |    |      |    |   |   |     |    |   |                                |
|---|----|----|------|----|---|---|-----|----|---|--------------------------------|
| Series name                                     | PE | 15 | 0470 | AR | K | 2 | -** | PC | T | Preload code (See page A21.6.) |
| Size  |    |    |      |    |   |   |     |    |   | 0: Z0, 1: Z1, 1: Z1            |
| Rail length (mm)                                |    |    |      |    |   |   |     |    |   | Accuracy code (See Table 12.)  |
| Ball slide shape code (See page A21.4.)         |    |    |      |    |   |   |     |    |   | Design serial number           |
| Material/surface treatment code (See Table 11.) |    |    |      |    |   |   |     |    |   | Added to the reference number. |
| K: Stainless steel                              |    |    |      |    |   |   |     |    |   | Number of ball slides per rail |

Front view



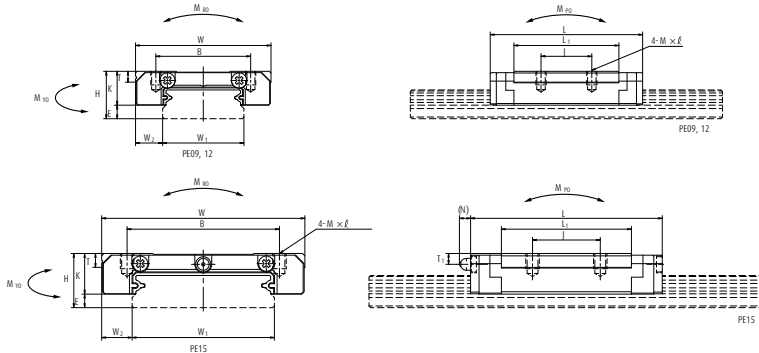
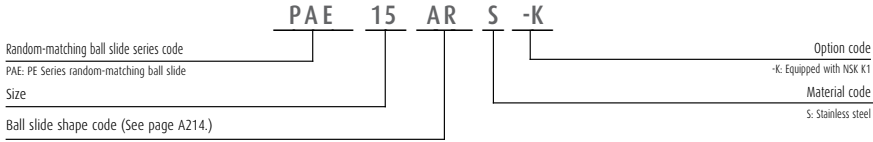
Side view



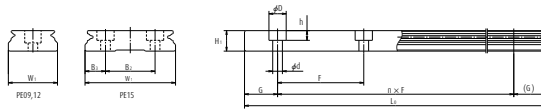
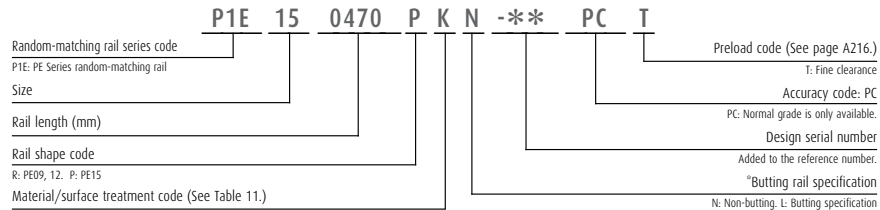
| Model No. | Assembly |     |                | Ball slide |        |               |    |               |                |     |     |           |                |       | Width | Height |
|-----------|----------|-----|----------------|------------|--------|---------------|----|---------------|----------------|-----|-----|-----------|----------------|-------|-------|--------|
|           | Height   | E   | W <sub>2</sub> | Width      | Length | Mounting hole |    |               | L <sub>1</sub> | K   | T   | Oil hole  |                |       |       |        |
|           |          |     |                |            |        | B             | J  | M × pitch × l |                |     |     | Hole size | T <sub>1</sub> | N     |       |        |
| PE05AR    | 6.5      | 1.4 | 3.5            | 17         | 24.1   | 13            | —  | M2.5×0.45×1.5 | 16.4           | 5.1 | 2.5 | φ 0.9     | 1.3            | —     | 10    | 4      |
| PE07TR    | 9        | 2   | 5.5            | 25         | 31.1   | 19            | 10 | M3×0.5×2.8    | 20.8           | 7   | 3   | φ 1.9     | 1.9            | —     | 14    | 5.2    |
| PE09TR    | 12       | 4   | 6              | 30         | 39.8   | 21            | 12 | M3×0.5×3      | 26.6           | 8   | 2.8 | φ 2       | 2.3            | —     | 18    | 7.5    |
| PE09UR    | 12       | 4   | 6              | 30         | 51.2   | 23            | 24 | M3×0.5×3      | 38             | 8   | 2.8 | φ 2       | 2.3            | —     | 18    | 7.5    |
| PE12AR    | 14       | 4   | 8              | 40         | 45     | 28            | 15 | M3×0.5×4      | 31             | 10  | 3.2 | φ 2.5     | 2.7            | —     | 24    | 8.5    |
| PE12BR    | 14       | 4   | 8              | 40         | 60     | 28            | 28 | M3×0.5×4      | 46             | 10  | 3.2 | φ 2.5     | 2.7            | —     | 24    | 8.5    |
| PE15AR    | 16       | 4   | 9              | 60         | 56.6   | 45            | 20 | M4×0.7×4.5    | 38.4           | 12  | 4.1 | φ 3       | 3.2            | (3.3) | 42    | 9.5    |
| PE15BR    | 16       | 4   | 9              | 60         | 76     | 45            | 35 | M4×0.7×4.5    | 57.8           | 12  | 4.1 | φ 3       | 3.2            | (3.3) | 42    | 9.5    |

Notes 1) Ball slide of PE05AR has only two mounting tap holes in the center.

### Reference number for ball slide of random-matching type



### Reference number for rail of random-matching type



\*Please consult with NSK for butting rail specification.

Unit: mm

| Rail           |    |                                 |                  |                                     | Basic load rating             |                                 |                              |                 |                     |            |                 |            | Weight            |                    |
|----------------|----|---------------------------------|------------------|-------------------------------------|-------------------------------|---------------------------------|------------------------------|-----------------|---------------------|------------|-----------------|------------|-------------------|--------------------|
| B <sub>2</sub> | F  | Mounting bolt hole<br>d × D × h | G<br>(reference) | Maximum length<br>L <sub>0max</sub> | 2) Dynamic                    |                                 | Static<br>C <sub>0</sub> (N) | M <sub>RO</sub> | Static moment (N-m) |            |                 |            | Ball slide<br>(g) | Rail<br>(g/100 mm) |
|                |    |                                 |                  |                                     | [50km]<br>C <sub>50</sub> (N) | [100km]<br>C <sub>100</sub> (N) |                              |                 | M <sub>PO</sub>     |            | M <sub>YO</sub> |            |                   |                    |
|                |    |                                 |                  |                                     |                               |                                 |                              |                 | One slide           | Two slides | One slide       | Two slides |                   |                    |
| —              | 20 | 3.5×5×1.6                       | 7.5              | 150                                 | 690                           | 550                             | 1 160                        | 6.00            | 2.75                | 17.5       | 2.75            | 17.5       | 7                 | 34                 |
| —              | 30 | 3.5×6×3.2                       | 10               | 600                                 | 1 580                         | 1 260                           | 2 350                        | 16.7            | 7.20                | 46.0       | 7.20            | 46.0       | 19                | 55                 |
| —              | 30 | 3.5×6×4.5                       | 10               | 800                                 | 3 000                         | 2 390                           | 4 500                        | 36.5            | 17.3                | 113        | 17.3            | 113        | 35                | 95                 |
| —              | 30 | 3.5×6×4.5                       | 10               | 800                                 | 4 000                         | 3 150                           | 6 700                        | 54.5            | 37.5                | 210        | 37.5            | 210        | 50                | 95                 |
| —              | 40 | 4.5×8×4.5                       | 15               | 1 000                               | 4 350                         | 3 450                           | 6 350                        | 70.5            | 29.3                | 180        | 29.3            | 180        | 66                | 140                |
| —              | 40 | 4.5×8×4.5                       | 15               | 1 000                               | 5 800                         | 4 600                           | 9 550                        | 106             | 63.5                | 345        | 63.5            | 345        | 98                | 140                |
| 23             | 40 | 4.5×8×4.5                       | 15               | 1 200                               | 7 600                         | 6 050                           | 10 400                       | 207             | 59.0                | 370        | 59.0            | 370        | 140               | 275                |
| 23             | 40 | 4.5×8×4.5                       | 15               | 1 200                               | 10 300                        | 8 200                           | 16 000                       | 320             | 135                 | 740        | 135             | 740        | 211               | 275                |

2) The basic load rating comply with the ISO standard. (ISO 14728-1, 14728-2)

C<sub>50</sub>: the basic dynamic load rating for 50 km rated fatigue life C<sub>100</sub>: the basic dynamic load rating for 100 km rated fatigue life

5) To fix rail of PE05AR, use M2.5 × 0.45 cross-recessed pan head machine screw for precision instrument.

(JIS 10-70 No. 0 pan head machine screw No.3.)

(JIS: Japanese Camera Industrial Standard.)