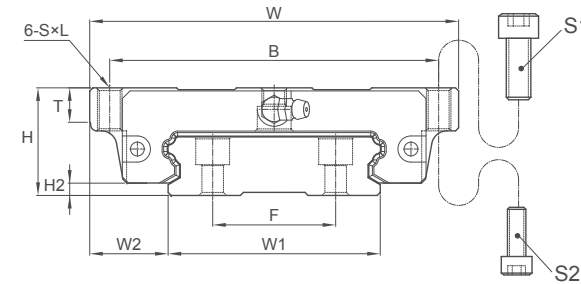
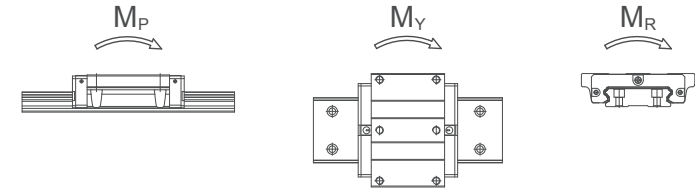
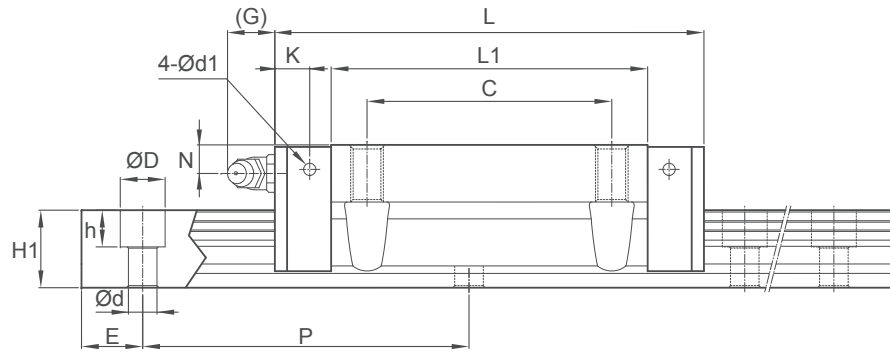


# Dimensions of MSG-E



Model No.	Bolt Size	
	S <sub>1</sub>	S <sub>2</sub>
MSG 17	M4	M3
MSG 21	M5	M4
MSG 27	M6	M5
MSG 35	M8	M6

Unit: mm

Model No.	External dimension					Carriage dimension											Grease Nipple
	Height H	Width W	Length L	W <sub>2</sub>	H <sub>2</sub>	B	C	F	S × l	L <sub>1</sub>	T	N	G	K	d <sub>1</sub>		
MSG17 E	17	60	50.2	13.5	2.5	53	26	18	M4x6	33.6	4.7	4.15	4	2.5	2.4	G-M3	
MSG21 E	21	68	59	15.5	3	60	29	22	M5x8	40	6	5	12	5.5	2.5	G-M6	
MSG27 E	27	80	72.2	19	3	70	40	24	M6x10	51.8	8	6	12	6.2	3.3	G-M6	
MSG35 E	35	120	105.2	25.5	4	107	60	40	M8x14	77.6	11.42	7	12	8.55	3.3	G-M6	

Note: The basic dynamic load rating C of ball type is based on the 50 km for nominal life. The conversion between C for 50 km and C<sub>100</sub> for 100 km is C=1.26 × C<sub>100</sub>.

Note\*: Single: Single carriage/ Double: Double carriages closely contacting with each other.

Unit: mm

Model No.	Rail dimension					Basic load rating		Static moment rating					Weight	
	Width W <sub>1</sub>	Height H <sub>1</sub>	Pitch P	E std.	D × h × d	Dynamic C kN	Static C <sub>0</sub> kN	M <sub>p</sub> kN-m		M <sub>v</sub> kN-m		M <sub>i</sub> kN-m	Carriage kg	Rail kg/m
								Single*	Double*	Single*	Double*			
MSG17 E	33	9	40	15	7.5×5.3×4.5	4.8	8.6	0.05	0.24	0.05	0.24	0.14	0.14	2.02
MSG21 E	37	11	50	15	7.5×5.3×4.5	7	12.1	0.08	0.46	0.08	0.46	0.22	0.25	2.86
MSG27 E	42	15	60	20	7.5×5.3×4.5	12.4	20.2	0.15	0.87	0.15	0.87	0.42	0.31	4.49
MSG35 E	69	19	80	20	11×9×7	30.7	48.6	0.65	3.6	0.65	3.6	1.67	0.99	9.4