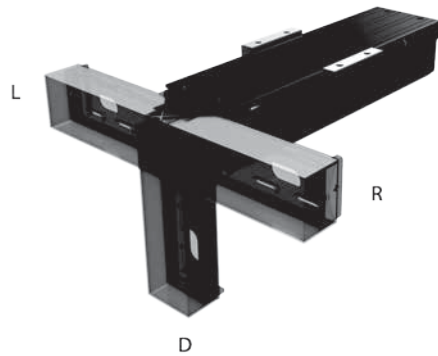


Parallel Type

Characteristics

It is special type that allows the motor to be turn around in order to minimize the dimension in the longitudinal direction (pulley ratio 1:1). Please contact *PMI* for details.



User could change direction to meet the requirement.

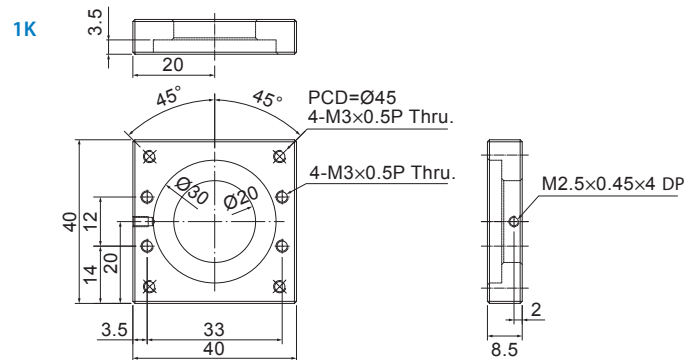
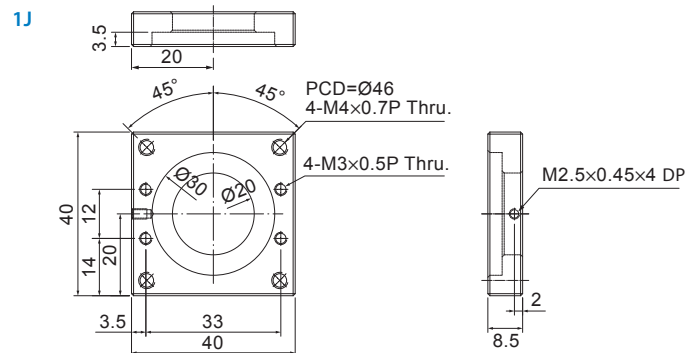
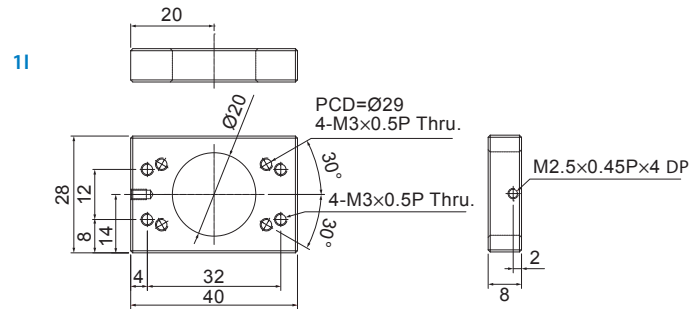


Description of Specification

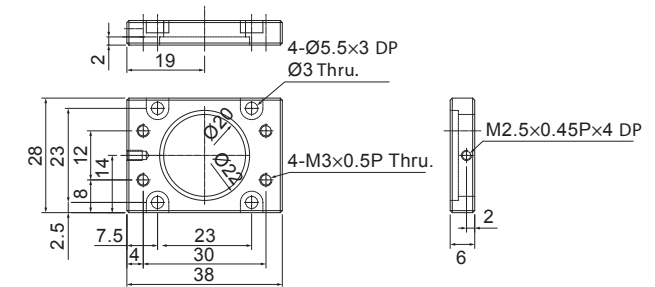
	KM33	05	A	+400	P	R	1	-0	0	30	CA	AA
Model	KM33 05 A +400 P R 1 -0 0 30 CA AA											
Ballscrew Lead	05											
Carriage-Nut type	A											
A: A single carriage-nut with standard length												
B: Two carriage-nuts with standard length												
C: A single carriage-nut with short length												
D: Two carriage-nuts with short length												
Rail length (mm)	+400											
Accuracy grade	P											
N: Normal grade												
P: Precision grade												
Motor direction	R											
R: Right												
L: Left												
U: Up												
D: Down												
With / Without a Motor	1											
0: None												
1: With a Motor												
With / Without a Cover	1											
0: None												
1: With a Cover												
2: With a Bellows												
Sensor Specification	0											
Type of Motor Bracket type	30											
Surface treatment mode:	CA											
No symbol : Black Chrome Plating + Special Fluororesin(PS-CF)												
CB: Black oxide treatment												
CE: Black Chrome Plating(PS-C)												
CA: Electroless Nickel												
Code of special type	AA											
AA: Special process												
A1: Heighten housing												
No symbol: Standard housing												

The dimension of intermediate flange

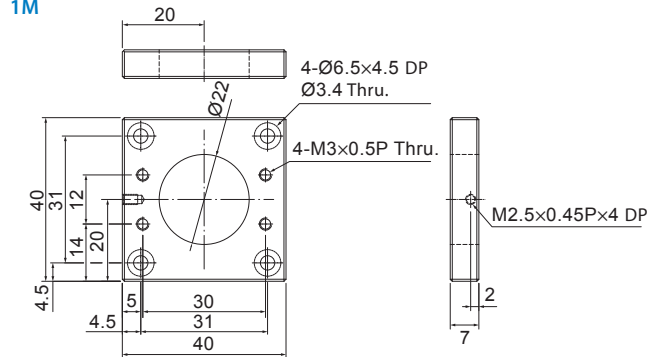
KM20



1L



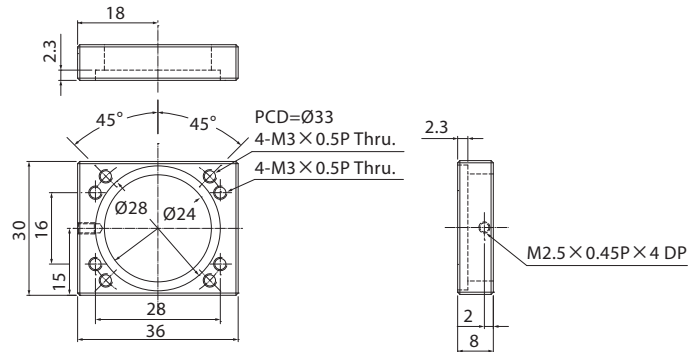
1M



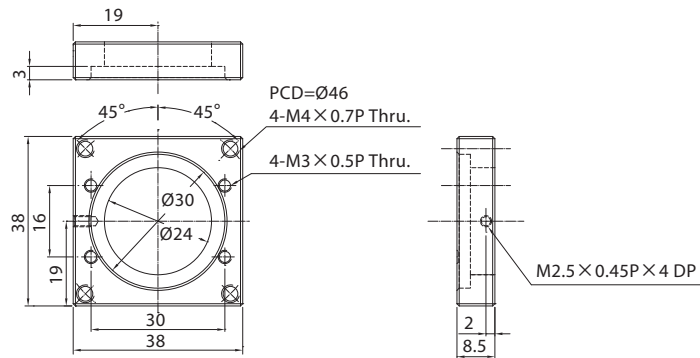
Parallel Type

KM26

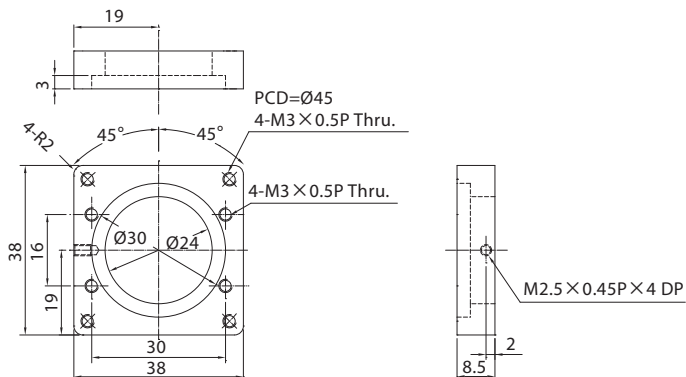
2I



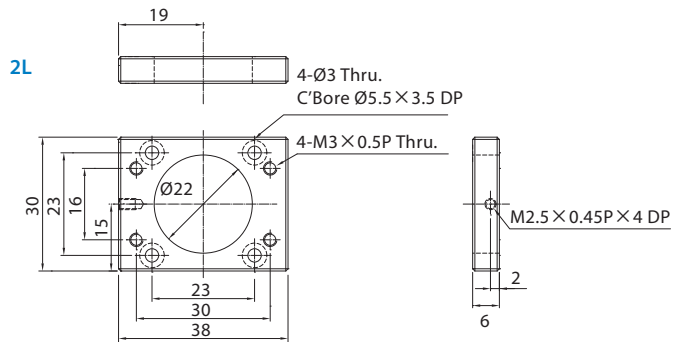
2J



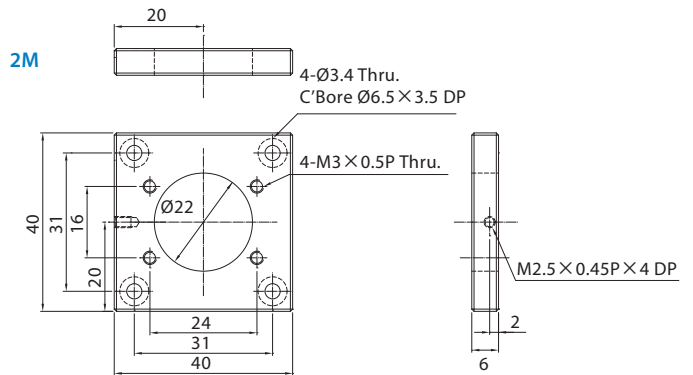
2K



2L

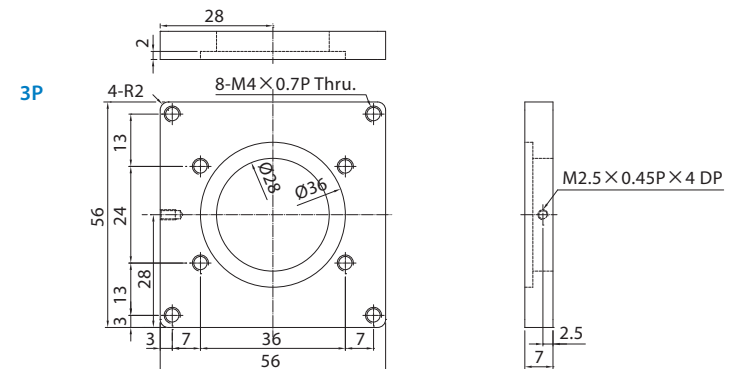
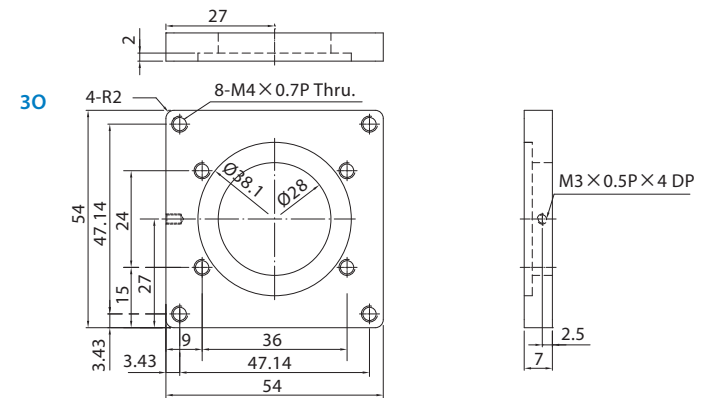
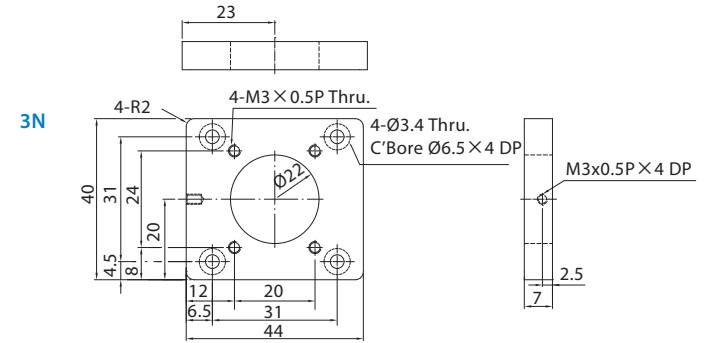
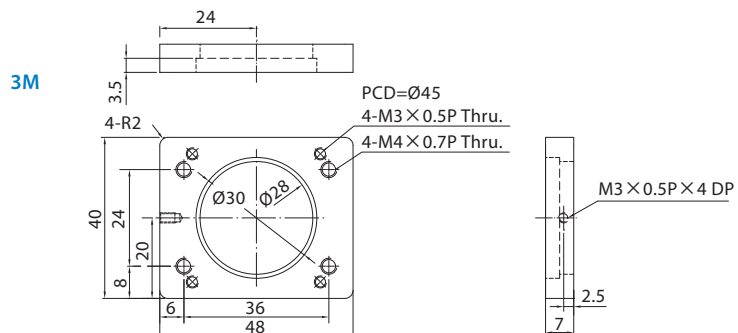
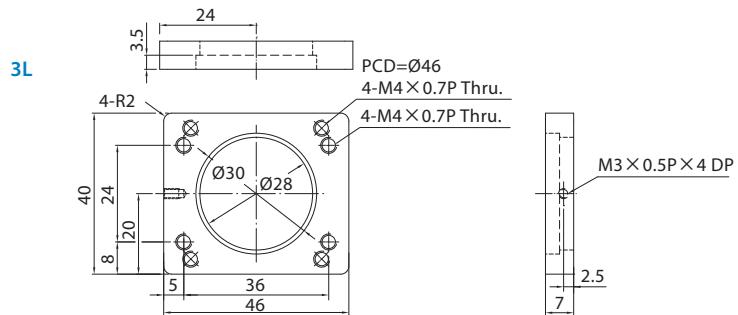
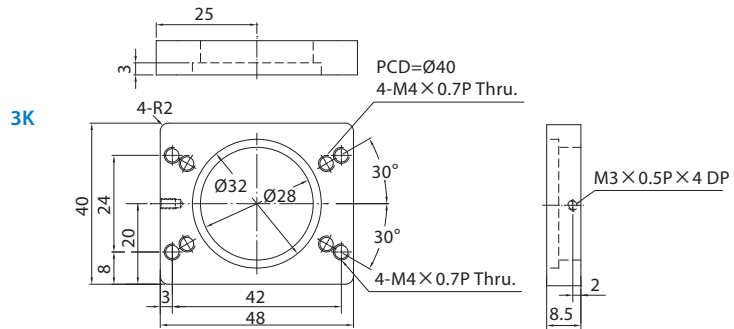


2M



Parallel Type

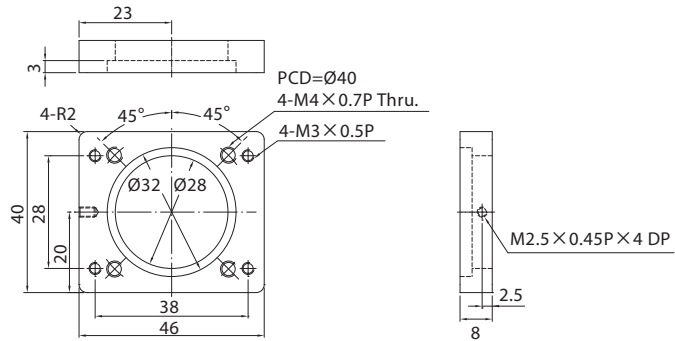
KM30



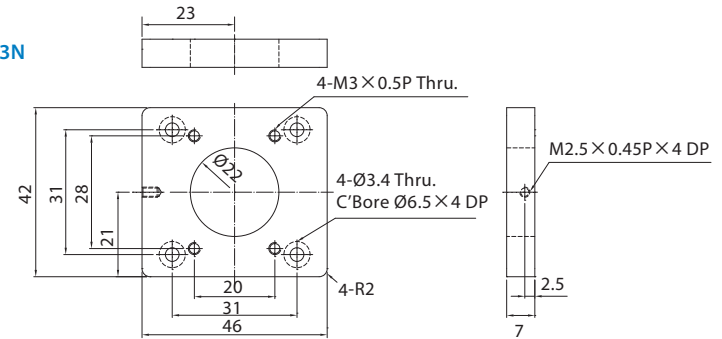
Parallel Type

KM33

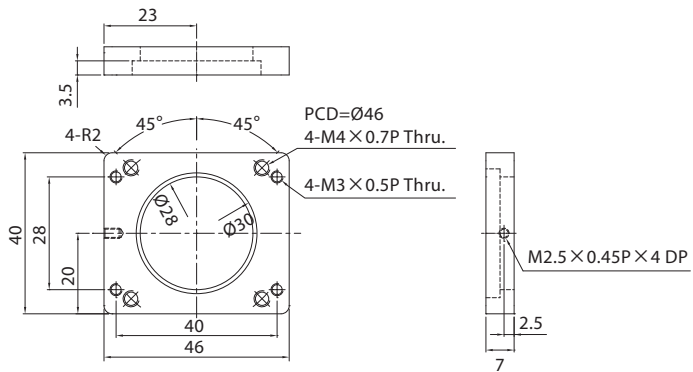
3K



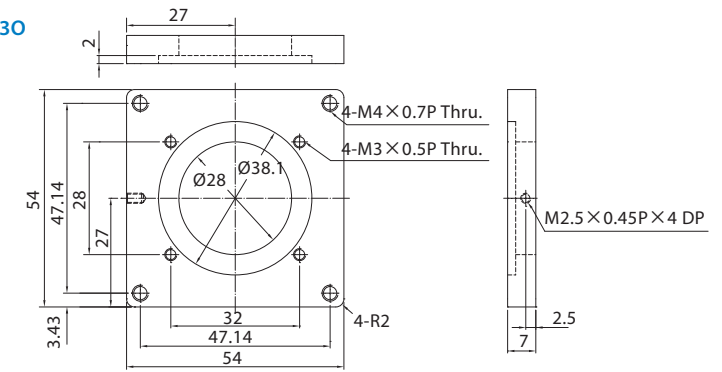
3N



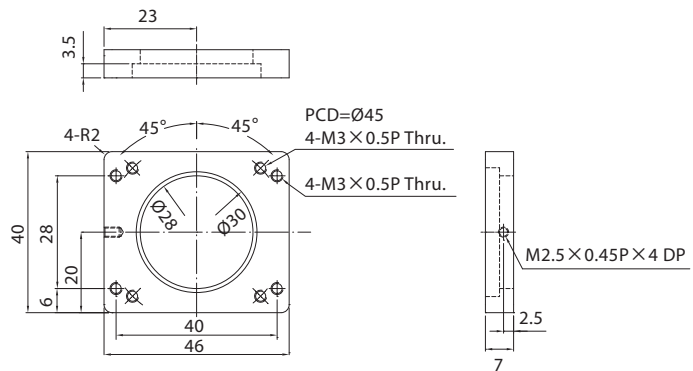
3L



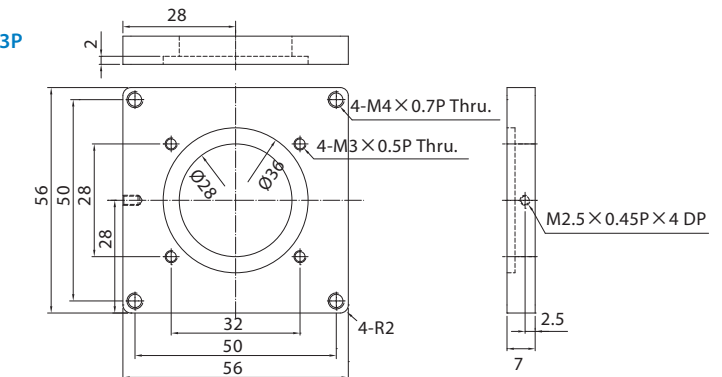
30



3M



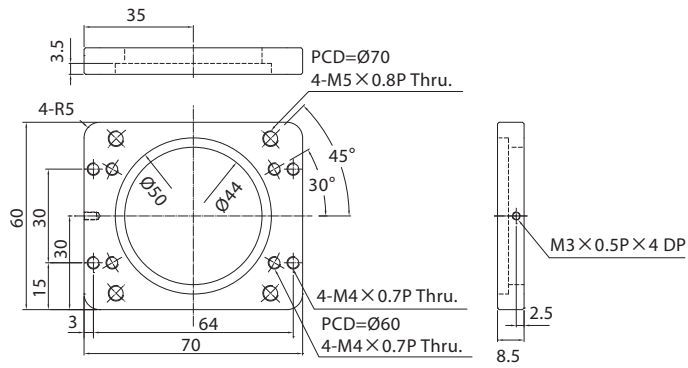
3P



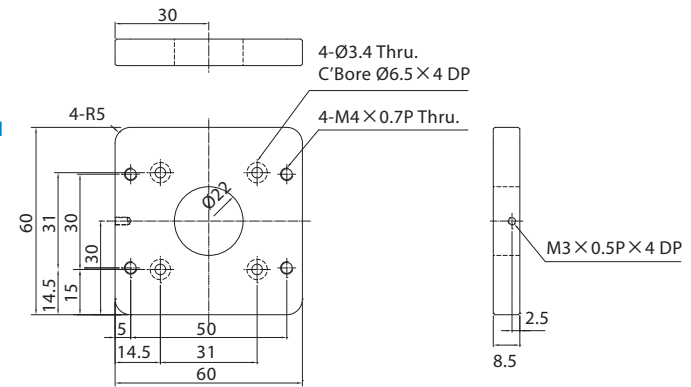
Parallel Type

KM45

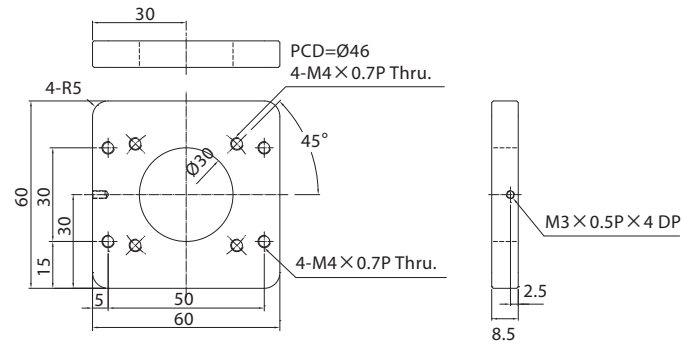
4K



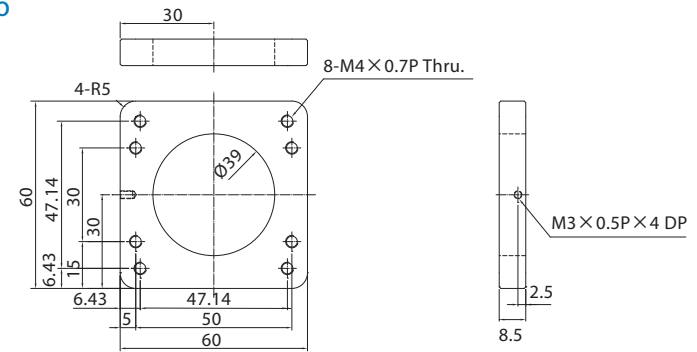
4N



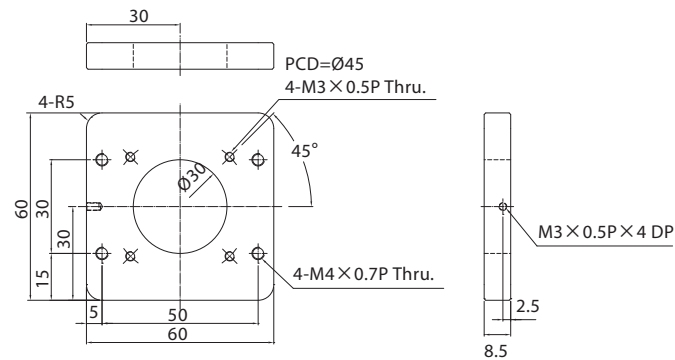
4L



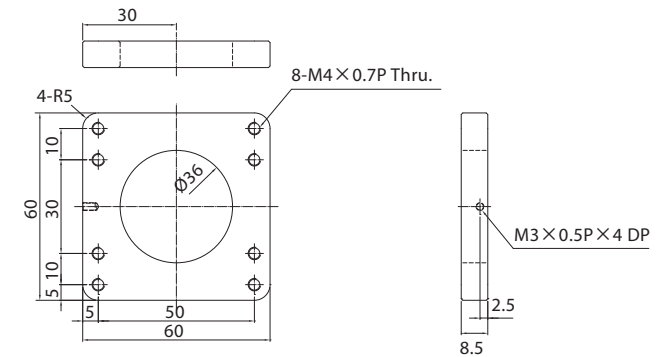
4O



4M



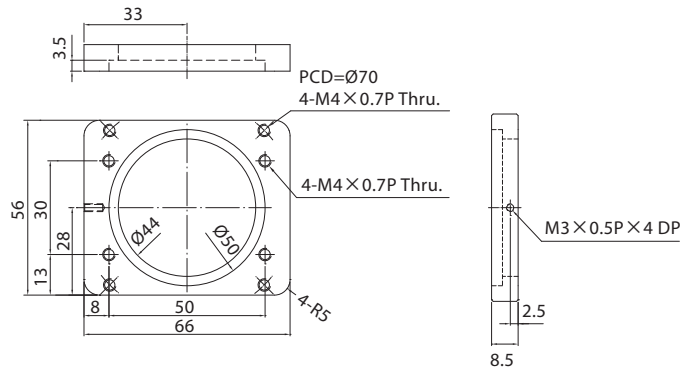
4P



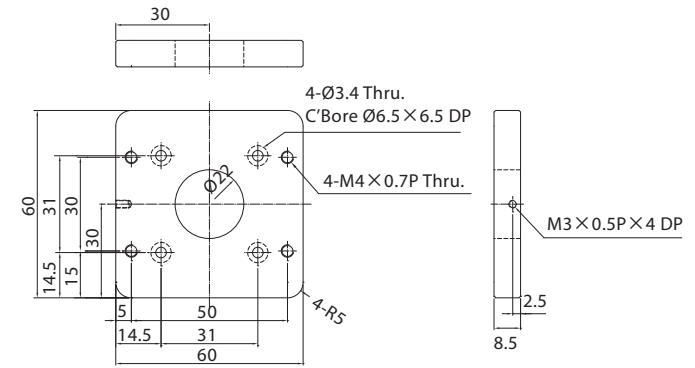
Parallel Type

KM46

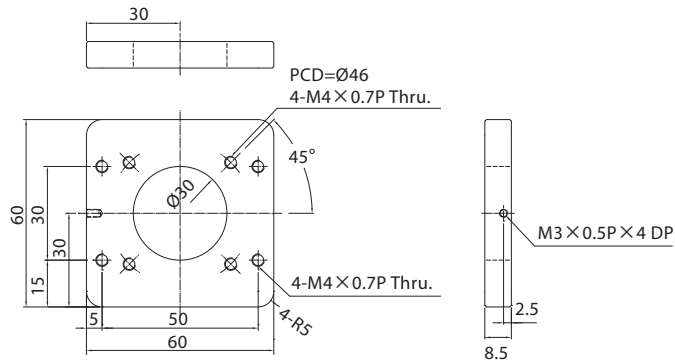
4K



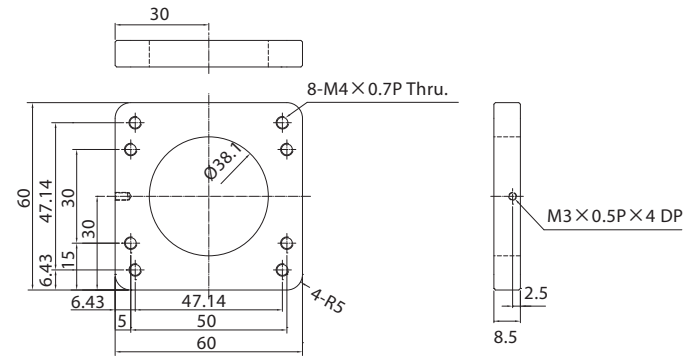
4N



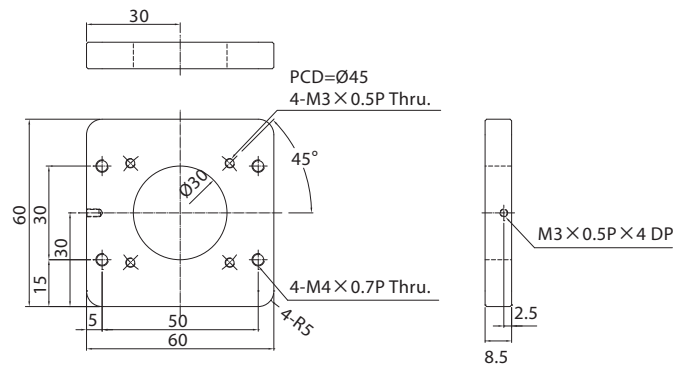
4L



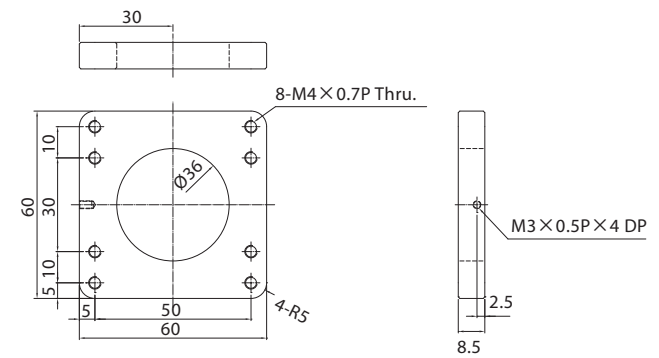
4O



4M



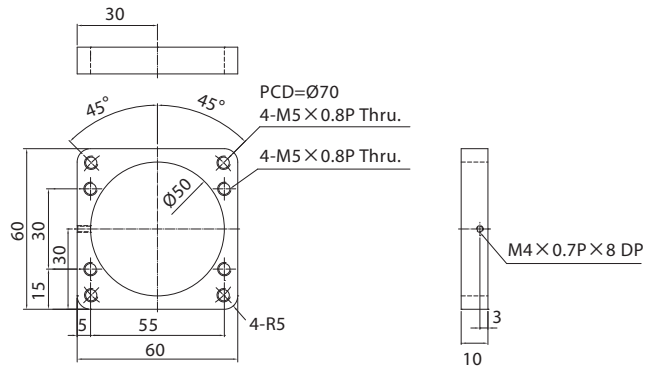
4P



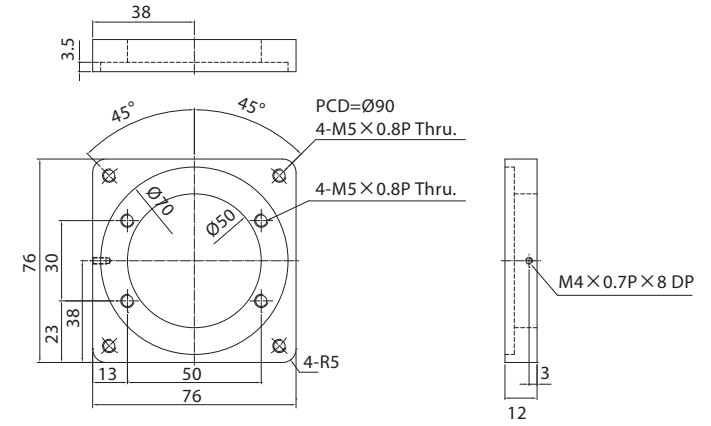
Parallel Type

KM55

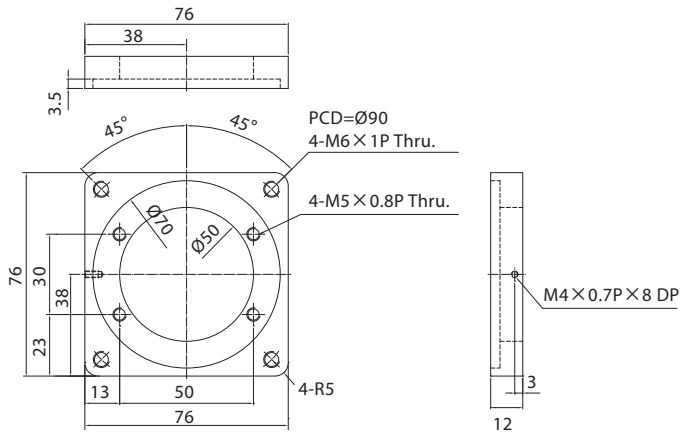
5L



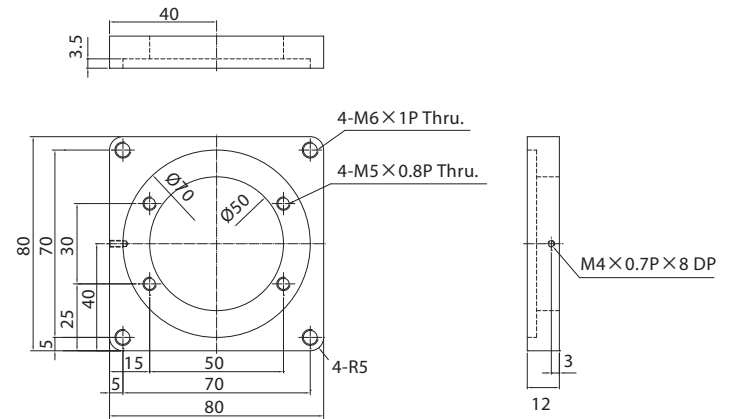
5N



5M



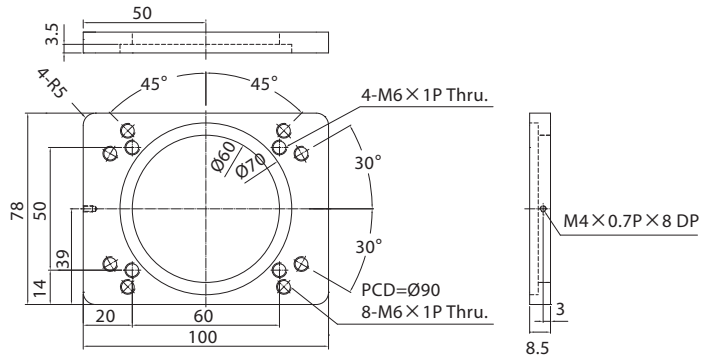
5O



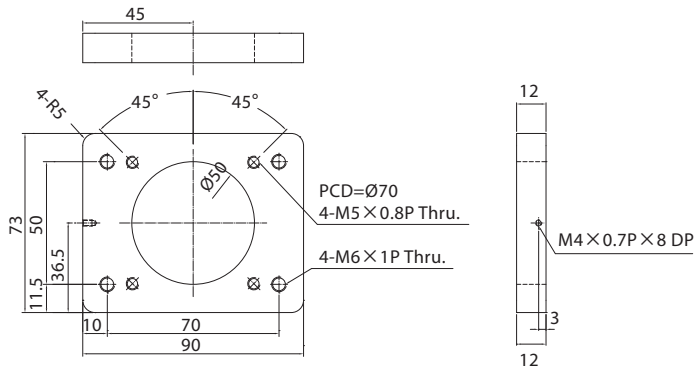
Parallel Type

KM65

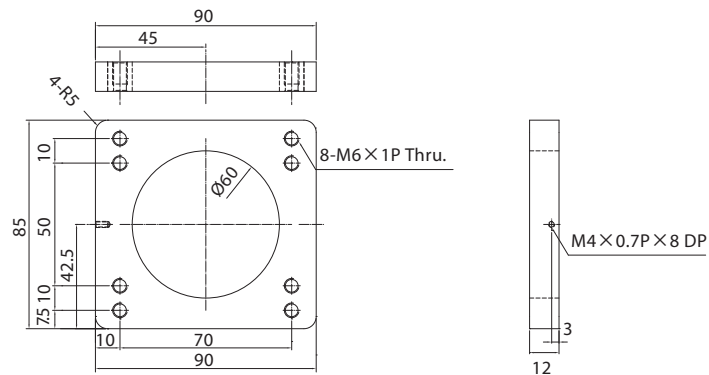
6L



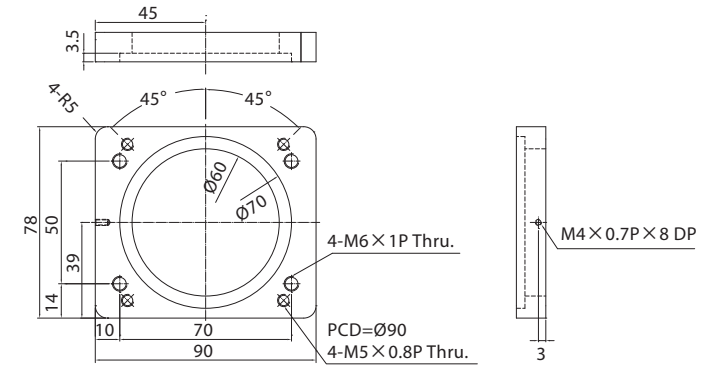
6M



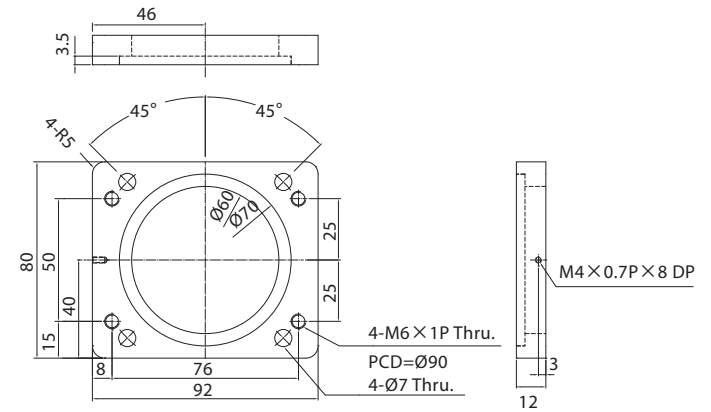
6N



6O



6P



Parallel Type