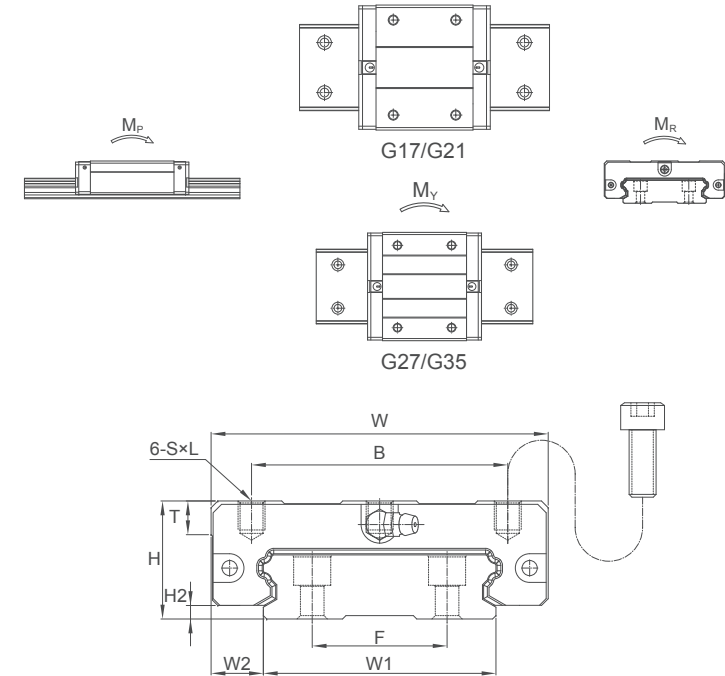
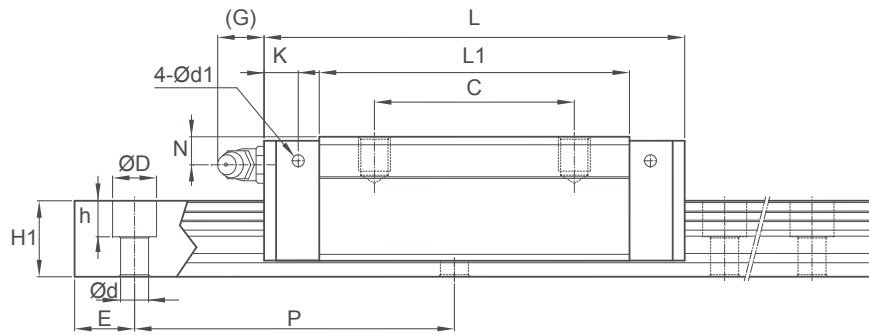


# Dimensions of MSG-S



Unit: mm

Model No.	External dimension					Carriage dimension											Grease Nipple
	Height H	Width W	Length L	W <sub>2</sub>	H <sub>2</sub>	B	C	F	S × l	L <sub>1</sub>	T	N	G	K	d <sub>1</sub>		
<b>MSG17 S</b>	17	50	50.2	8.5	2.5	29	15	18	M4×4	33.6	6	4.15	4	2.5	2.4	G-M3	
<b>MSG21 S</b>	21	54	59	8.5	3	31	19	22	M5×6	40	8	5	12	5.5	2.5	G-M6	
<b>MSG27 S</b>	27	62	72.2	10	3	46	32	24	M6×6	51.8	10	6	12	6.2	3.3	G-M6	
<b>MSG35 S</b>	35	100	105.2	15.5	4	76	50	40	M8×8	77.6	10	7	12	8.55	3.3	G-M6	

Note: The basic dynamic load rating C of ball type is based on the 50 km for nominal life. The conversion between C for 50 km and C<sub>100</sub> for 100 km is C=1.26 × C<sub>100</sub>.

Note\*: Single: Single carriage/ Double: Double carriages closely contacting with each other.

Unit: mm

Model No.	Rail dimension					Basic load rating		Static moment rating				Weight		
	Width W <sub>1</sub>	Height H <sub>1</sub>	Pitch P	E std.	D × h × d	Dynamic C kN	Static C <sub>0</sub> kN	M <sub>p</sub> kN-m		M <sub>v</sub> kN-m		M <sub>R</sub> kN-m	Carriage kg	Rail kg/m
								Single*	Double*	Single*	Double*			
<b>MSG17 S</b>	33	9	40	15	7.5×5.3×4.5	4.8	8.6	0.05	0.24	0.05	0.24	0.14	0.12	2.02
<b>MSG21 S</b>	37	11	50	15	7.5×5.3×4.5	7	12.1	0.08	0.46	0.08	0.46	0.22	0.25	2.86
<b>MSG27 S</b>	42	15	60	20	7.5×5.3×4.5	12.4	20.2	0.15	0.87	0.15	0.87	0.42	0.31	4.49
<b>MSG35 S</b>	69	19	80	20	11×9×7	30.7	48.6	0.65	3.6	0.65	3.6	1.67	0.99	9.4