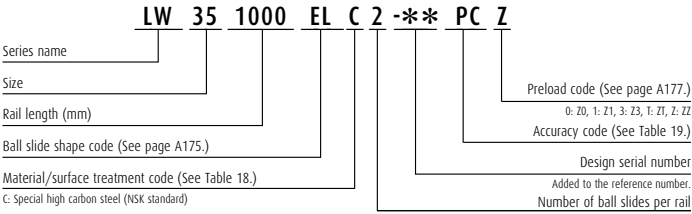
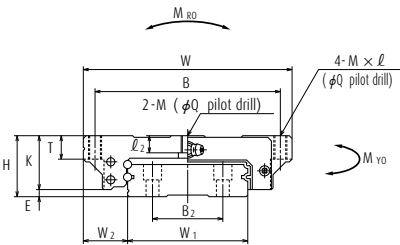


(9) Dimensions

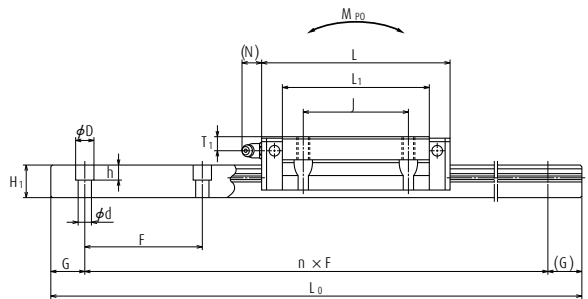
LW-EL



Front view

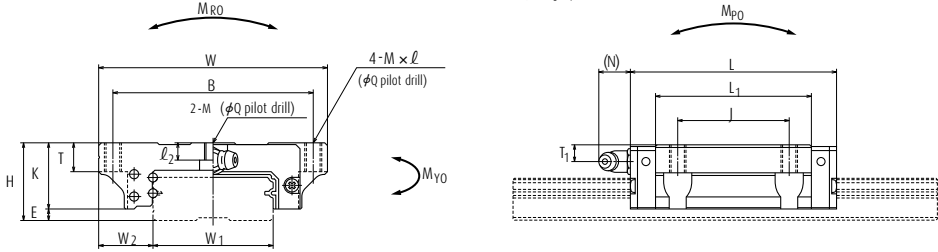
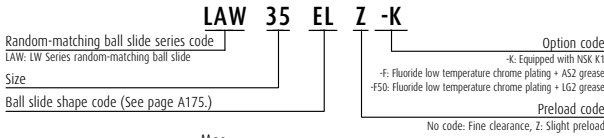


Side view

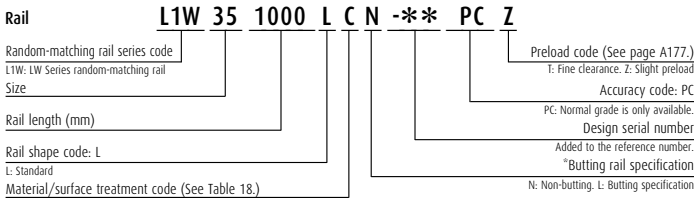


Model No.	Assembly			Ball slide															Width	Height	
	Height	E	W ₂	Width	Length	Mounting hole						L ₁	K	T	Grease fitting			W ₁			H ₁
						B	J	M × pitch × l	l ₂	Q	Hole size				T ₁	N					
LW17EL	17	2.5	13.5	60	51.4	53	26	M4×0.7×6	3.2	3.3	35	14.5	6	φ 3	4	3	33	8.7			
LW21EL	21	3	15.5	68	58.8	60	29	M5×0.8×8	3.7	4.4	41	18	8	M6×0.75	4.5	11	37	10.5			
LW27EL	27	4	19	80	74	70	40	M6×1×10	6	5.3	56	23	10	M6×0.75	6	11	42	15			
LW35EL	35	4	25.5	120	108	107	60	M8×1.25×14	9	6.8	84	31	14	M6×0.75	8	11	69	19			
LW50EL	50	4.5	36	162	140.6	144	80	M10×1.5×18	14	8.6	108	45.5	18	Rc1/8	14	14	90	24			

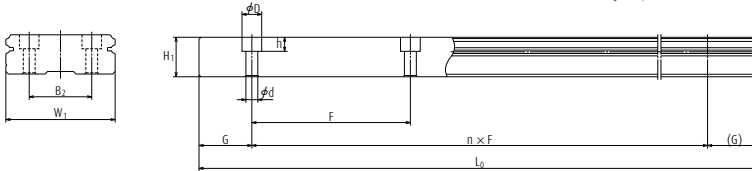
Reference number for ball slide of random-matching type



Reference number for rail of random-matching type



*Please consult with NSK for butting rail specification.



Unit: mm

Rail					Basic load rating								Weight	
Pitch B ₂	Mounting bolt hole F	Mounting hole d × D × h	G (reference)	Maximum length L _{0max} () for stainless	Dynamic		Static C ₀ (N)	M _{RO}	Static moment (N-m)				Ball slide (g)	Rail (g/100mm)
					[50km] C ₅₀ (N)	[100km] C ₁₀₀ (N)			M _{PO}		M _{YO}			
							One slide		Two slides	One slide	Two slides			
18	40	4.5×7.5×5.3	15	1 000	5 600	4 450	11 300	135	44	288	37	242	0.2	2.1
22	50	4.5×7.5×5.3	15	1 600	6 450	5 150	13 900	185	65.5	400	55	335	0.3	2.9
24	60	4.5×7.5×5.3	20	2 000	12 800	10 200	26 900	400	171	970	143	815	0.5	4.7
40	80	7×11×9	20	2 000	33 000	26 400	66 500	1 690	645	3 550	545	2 990	1.5	9.6
60	80	9×14×12	20	2 000	61 500	48 500	117 000	3 900	1 530	8 200	1 280	6 900	4.0	15.8

Note The basic load rating comply with the ISO standard. (ISO 14728-1, 14728-2)
C₅₀: the basic dynamic load rating for 50 km rated fatigue life C₁₀₀: the basic dynamic load rating for 100 km rated fatigue life