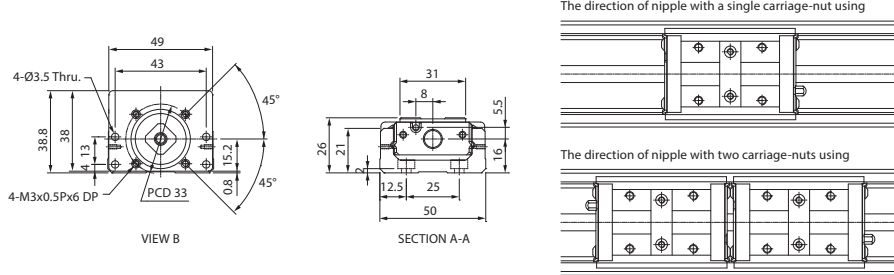
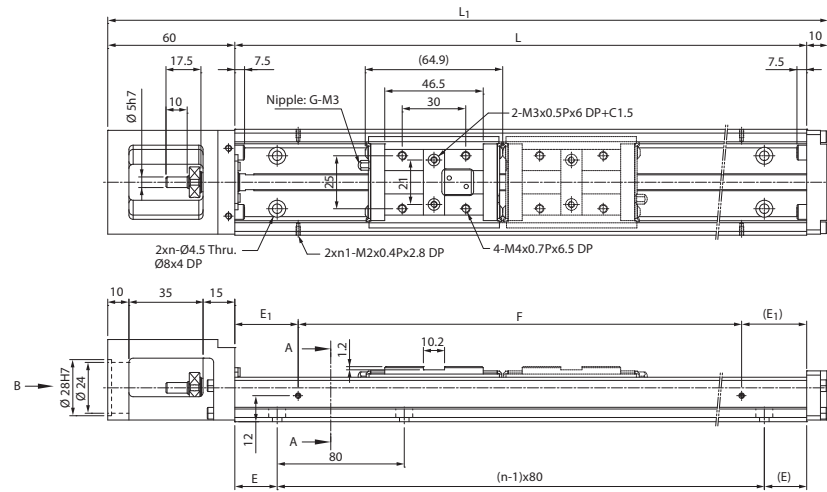


SKM26 Standard Type

A type : A single carriage-nut with standard length
B type : Two carriage-nuts with standard length



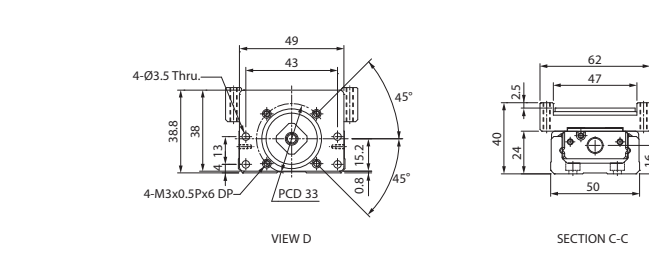
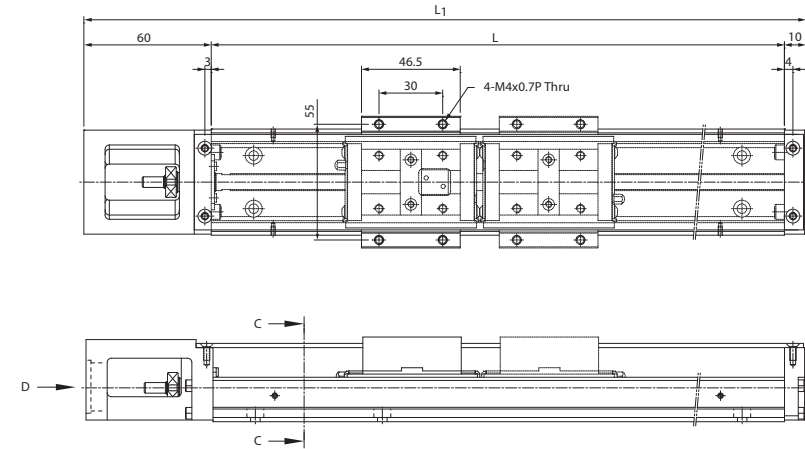
Unit : mm

Rail Length L	Overall Length L_1	Max. Stroke		E	n	E_1	n_1	F	Weight (kg)	
		A Type	B Type						A Type	B Type
		150	220						70	-
200	270	120	55	20	3	20	2	160	1.18	1.37
250	320	170	105	45	3	45	2	160	1.38	1.57
300	370	220	155	30	4	30	2	240	1.59	1.78

Note*: The max. stroke of B type is base on two carriage-nuts used in closed contact with each other.

SKM26 Cover Type

A type : A single carriage-nut with standard length
B type : Two carriage-nuts with standard length



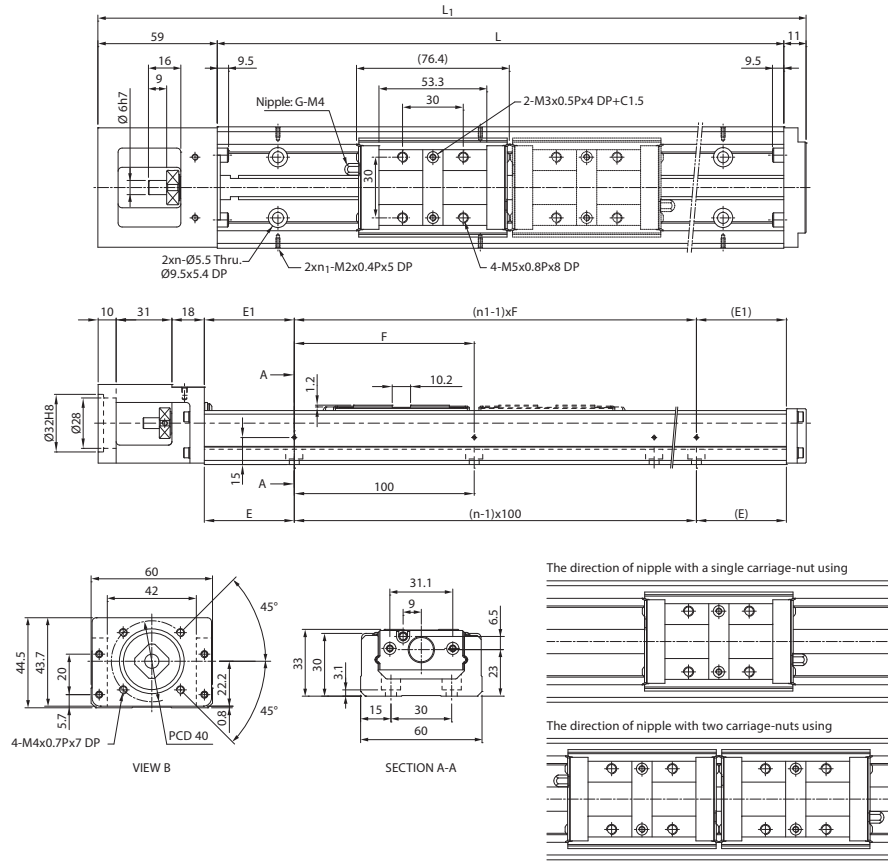
Unit : mm

Rail Length L	Overall Length L_1	Max. Stroke		Weight (kg)	
		A Type	B Type	A Type	B Type
		150	220	70	-
200	270	120	55	1.26	1.45
250	320	170	105	1.46	1.65
300	370	220	155	1.67	1.86

Note*: The max. stroke of B type is base on two carriage-nuts used in closed contact with each other.

SKM33 Standard Type

A type : A single carriage-nut with standard length
B type : Two carriage-nuts with standard length



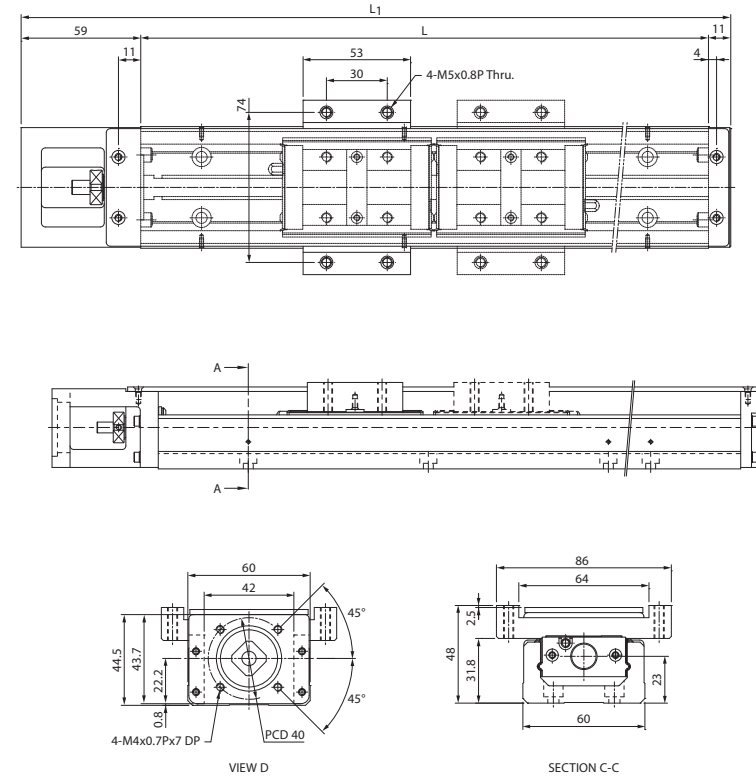
Unit : mm

Rail Length L	Overall Length L ₁	Max. Stroke		E	n	E ₁	n ₁	F	Weight (kg)	
		A Type	B Type						A Type	B Type
		150	220						54.5	-
200	270	104.5	-	50	2	50	2	100	1.98	-
300	370	204.5	128	50	3	50	2	200	2.56	2.91
400	470	304.5	228	50	4	100	2	200	3.15	3.5
500	570	404.5	328	50	5	50	3	200	3.85	4.2
600	670	504.5	428	50	6	100	3	200	4.46	4.81

Note*: The max. stroke of B type is base on two carriage-nuts used in closed contact with each other.

A type : A single carriage-nut with standard length
B type : Two carriage-nuts with standard length

SKM33 Cover Type



Unit : mm

Rail Length L	Overall Length L ₁	Max. Stroke		Weight (kg)	
		A Type	B Type	A Type	B Type
		150	220	54.5	-
200	270	104.5	-	2.18	-
300	370	204.5	128	2.76	3.21
400	470	304.5	228	3.38	3.83
500	570	404.5	328	4.09	4.54
600	670	504.5	428	4.71	5.16

Note*: The max. stroke of B type is base on two carriage-nuts used in closed contact with each other.