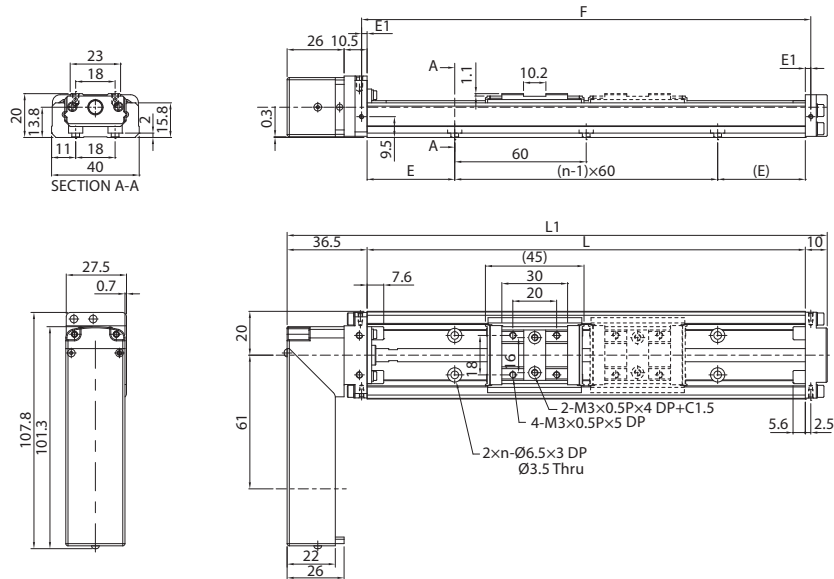


KM20 Standard Type

A type : A single carriage-nut with standard length
B type : Two carriage-nuts with standard length



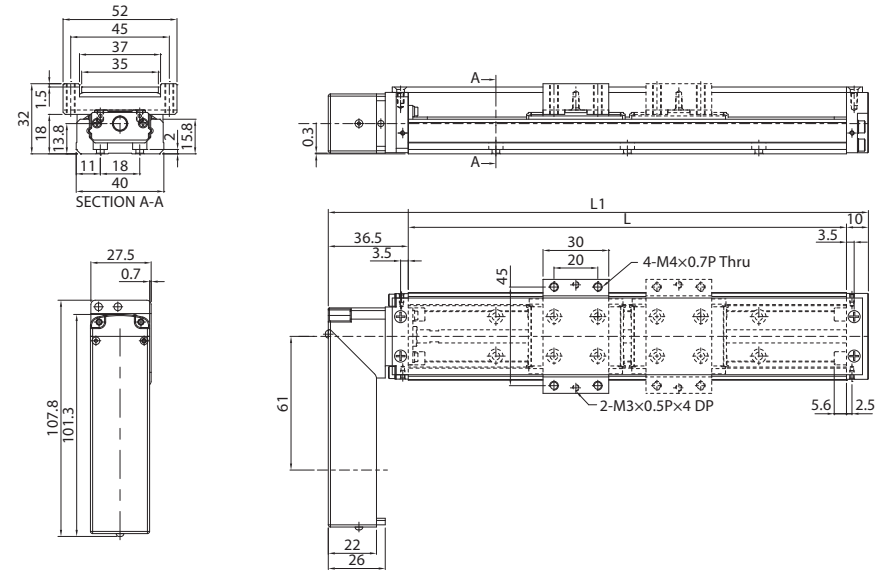
Unit: mm

Rail Length L	Overall Length L ₁	Max. Stroke		E	n	E ₁	F	Weight (kg)	
		A Type	B Type					A Type	B Type
100	146.5	41.8	-	20	2	2.5	105	0.473	-
150	196.5	91.8	46.8	15	3	2.5	155	0.593	0.693
200	246.5	141.8	96.8	40	3	2.5	205	0.713	0.813

Note*: The max. stroke of B type is base on two carriage-nuts used in closed contact with each other.

KM20 Cover Type

A type : A single carriage-nut with standard length
B type : Two carriage-nuts with standard length



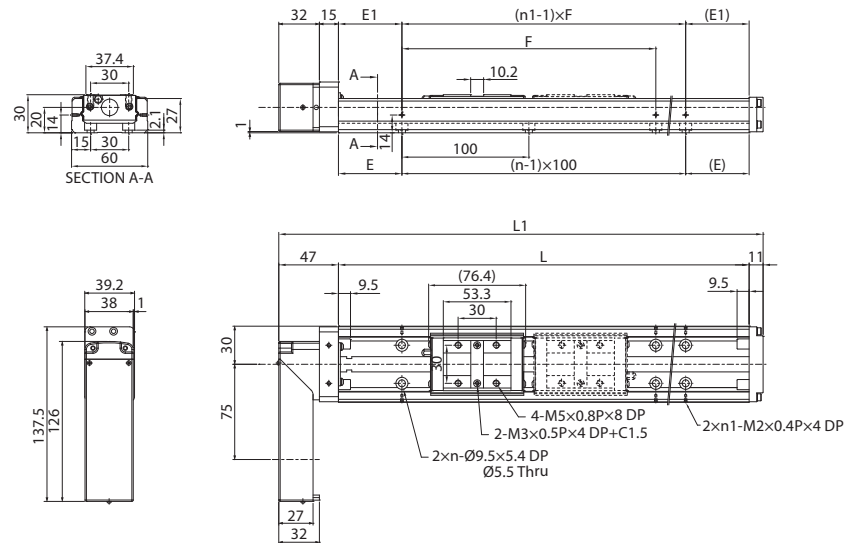
Unit: mm

Rail Length L	Overall Length L ₁	Max. Stroke		Weight (kg)	
		A Type	B Type	A Type	B Type
100	146.5	41.8	-	0.764	-
150	196.5	91.8	46.8	0.776	0.879
200	246.5	141.8	96.8	0.788	0.891

Note*: The max. stroke of B type is base on two carriage-nuts used in closed contact with each other.

KM30 Standard Type

A type : A single carriage-nut with standard length
B type : Two carriage-nuts with standard length



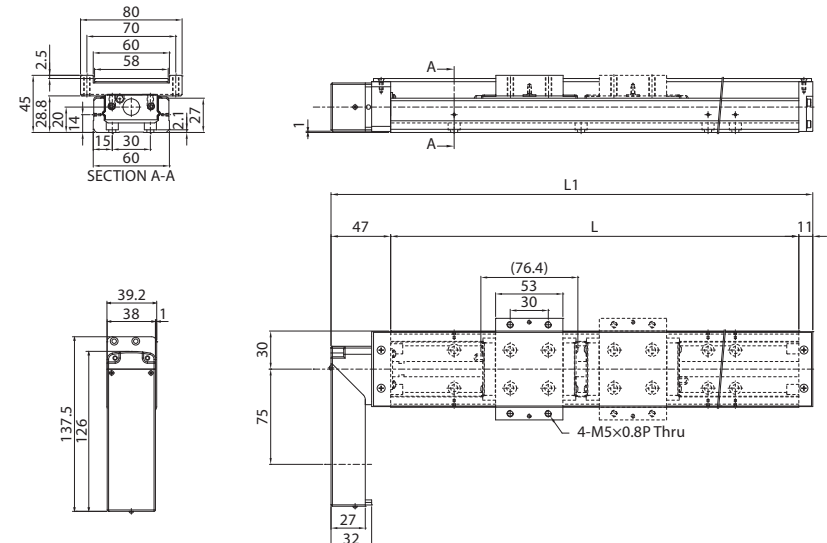
Unit: mm

Rail Length L	Overall Length L ₁	Max. Stroke		E	n	E ₁	n ₁	F	Weight (kg)	
		A Type	B Type						A Type	B Type
150	208	54.5	-	25	2	25	2	100	1.5	-
200	258	104.5	-	50	2	50	2	100	1.81	-
300	358	204.5	128	50	3	50	2	200	2.39	2.74
400	458	304.5	228	50	4	100	2	200	2.98	3.33
500	558	404.5	328	50	5	50	3	200	3.68	4.03
600	658	504.5	428	50	6	100	3	200	4.29	4.64

Note*: The max. stroke of B type is based on two carriage-nuts used in closed contact with each other.

KM30 Cover Type

A type : A single carriage-nut with standard length
B type : Two carriage-nuts with standard length



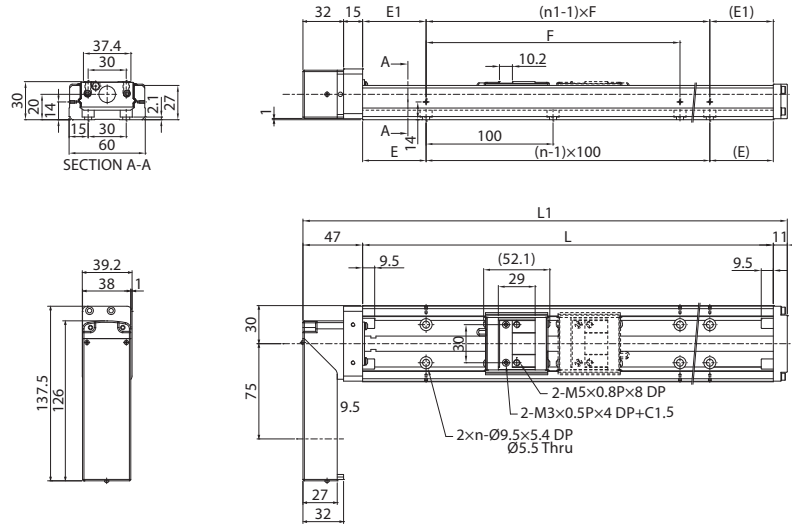
Unit: mm

Rail Length L	Overall Length L ₁	Max. Stroke		Weight (kg)	
		A Type	B Type	A Type	B Type
150	208	54.5	-	1.7	-
200	258	104.5	-	2.01	-
300	358	204.5	128	2.59	3.04
400	458	304.5	228	3.21	3.66
500	558	404.5	328	3.92	4.37
600	658	504.5	428	4.54	4.99

Note*: The max. stroke of B type is based on two carriage-nuts used in closed contact with each other.

KM30 Standard Type

C type : A single carriage-nut with short length
D type : Two carriage-nuts with short length



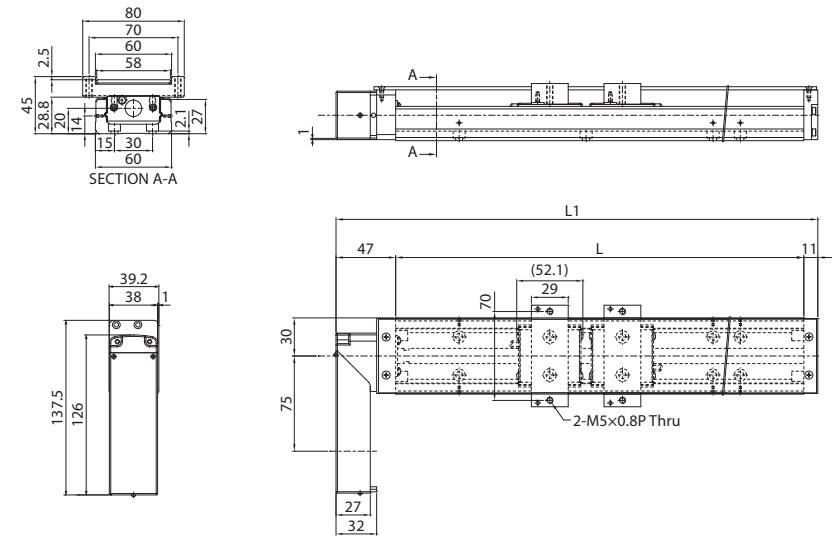
Unit: mm

Rail Length L	Overall Length L ₁	Max. Stroke		E	n	E ₁	n ₁	F	Weight (kg)	
		C Type	D Type						C Type	D Type
150	208	78.8	26.6	25	2	25	2	100	1.4	1.63
200	258	128.8	76.6	50	2	50	2	100	1.69	1.92
300	358	228.8	176.6	50	3	50	2	200	2.28	2.51
400	458	328.8	276.6	50	4	100	2	200	2.88	3.11
500	558	428.8	376.6	50	5	50	3	200	3.56	3.79
600	658	528.8	476.6	50	6	100	3	200	4.17	4.4

Note*: The max. stroke of D type is base on two carriage-nuts used in closed contact with each other.

KM30 Cover Type

C type : A single carriage-nut with short length
D type : Two carriage-nuts with short length



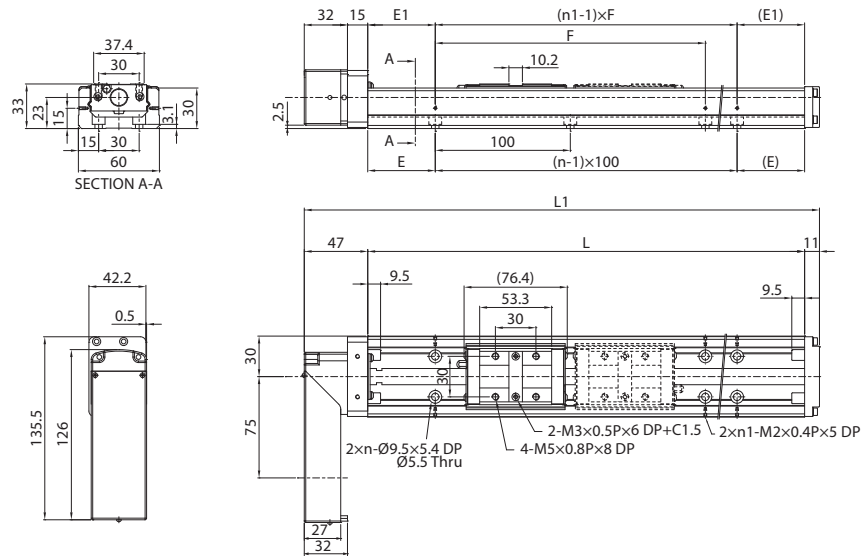
Unit: mm

Rail Length L	Overall Length L ₁	Max. Stroke		Weight (kg)	
		C Type	D Type	C Type	D Type
150	208	78.8	26.6	1.51	1.76
200	258	128.8	76.6	1.82	2.07
300	358	228.8	176.6	2.45	2.70
400	458	328.8	276.6	3.09	3.34
500	558	428.8	376.6	3.82	4.07
600	658	528.8	476.6	4.47	4.72

Note*: The max. stroke of D type is base on two carriage-nuts used in closed contact with each other.

KM33 Standard Type

A type : A single carriage-nut with standard length
B type : Two carriage-nuts with standard length



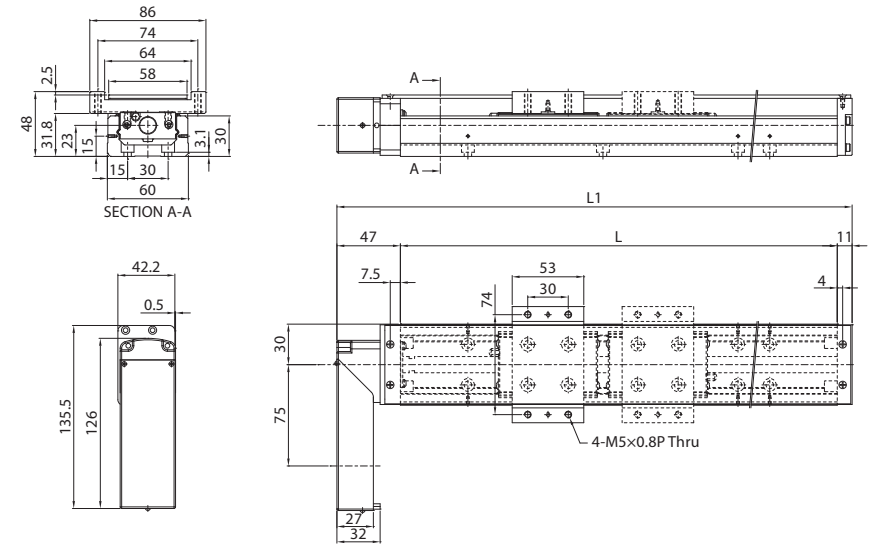
Unit: mm

Rail Length L	Overall Length L ₁	Max. Stroke		E	n	E ₁	n ₁	F	Weight (kg)	
		A Type	B Type						A Type	B Type
150	208	54.5	-	25	2	25	2	100	1.67	-
200	258	104.5	-	50	2	50	2	100	1.98	-
300	358	204.5	128	50	3	50	2	200	2.56	2.91
400	458	304.5	228	50	4	100	2	200	3.15	3.5
500	558	404.5	328	50	5	50	3	200	3.85	4.2
600	658	504.5	428	50	6	100	3	200	4.46	4.81

Note*: The max. stroke of B type is based on two carriage-nuts used in closed contact with each other.

KM33 Cover Type

A type : A single carriage-nut with standard length
B type : Two carriage-nuts with standard length



Unit: mm

Rail Length L	Overall Length L ₁	Max. Stroke		Weight (kg)	
		A Type	B Type	A Type	B Type
150	208	54.5	-	1.87	-
200	258	104.5	-	2.18	-
300	358	204.5	128	2.76	3.21
400	458	304.5	228	3.38	3.83
500	558	404.5	328	4.09	4.54
600	658	504.5	428	4.71	5.16

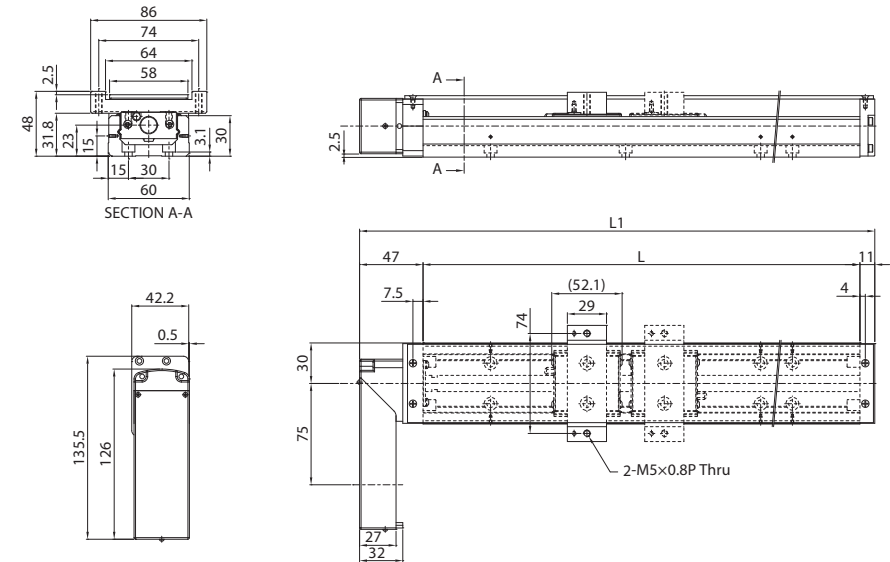
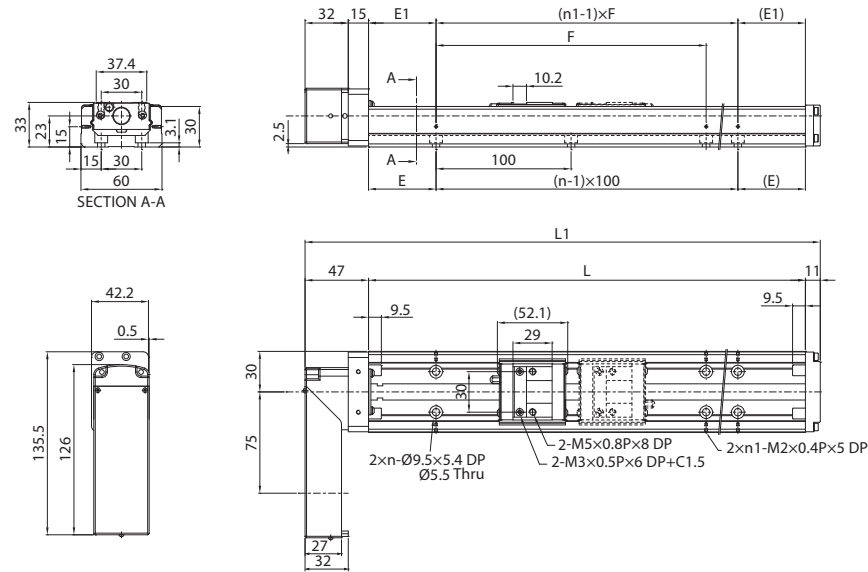
Note*: The max. stroke of B type is based on two carriage-nuts used in closed contact with each other.

KM33 Standard Type

C type : A single carriage-nut with short length
D type : Two carriage-nuts with short length

KM33 Cover Type

C type : A single carriage-nut with short length
D type : Two carriage-nuts with short length



Dimensions of Parallel Type

Unit: mm

Rail Length L	Overall Length L ₁	Max. Stroke		E	n	E ₁	n ₁	F	Weight (kg)	
		C Type	D Type						C Type	D Type
150	208	78.8	26.6	25	2	25	2	100	1.57	1.8
200	258	128.8	76.6	50	2	50	2	100	1.86	2.09
300	358	228.8	176.6	50	3	50	2	200	2.45	2.68
400	458	328.8	276.6	50	4	100	2	200	3.05	3.28
500	558	428.8	376.6	50	5	50	3	200	3.73	3.96
600	658	528.8	476.6	50	6	100	3	200	4.34	4.57

Note*: The max. stroke of D type is base on two carriage-nuts used in closed contact with each other.

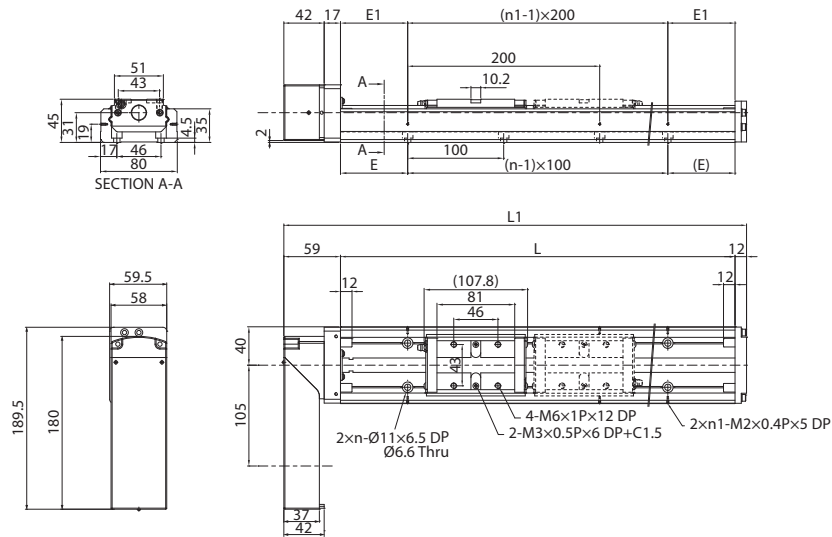
Unit: mm

Rail Length L	Overall Length L ₁	Max. Stroke		Weight (kg)	
		C Type	D Type	C Type	D Type
150	208	78.8	26.6	1.68	1.93
200	258	128.8	76.6	1.99	2.24
300	358	228.8	176.6	2.62	2.87
400	458	328.8	276.6	3.26	3.51
500	558	428.8	376.6	3.99	4.24
600	658	528.8	476.6	4.64	4.89

Note*: The max. stroke of D type is base on two carriage-nuts used in closed contact with each other.

KM45 Standard Type

A type : A single carriage-nut with standard length
B type : Two carriage-nuts with standard length



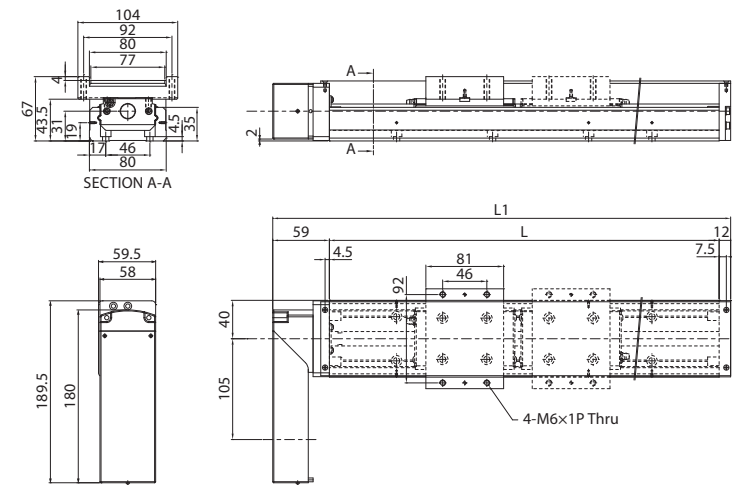
Unit: mm

Rail Length L	Overall Length L ₁	Max. Stroke		E	n	E ₁	n ₁	Weight (kg)	
		A Type	B Type					A Type	B Type
		340	411					208.2	100.4
440	511	308.2	200.4	70	4	20	3	8.07	9.27
540	611	408.2	300.4	70	5	70	3	9.37	10.57
640	711	508.2	400.4	70	6	20	4	10.68	11.88
740	811	608.2	500.4	70	7	70	4	12.08	13.28
840	911	708.2	600.4	70	8	20	5	13.2	14.4
940	1111	808.2	700.4	70	9	70	5	14.37	15.57

Note*: The max. stroke of B type is base on two carriage-nuts used in closed contact with each other.

KM45 Cover Type

A type : A single carriage-nut with standard length
B type : Two carriage-nuts with standard length



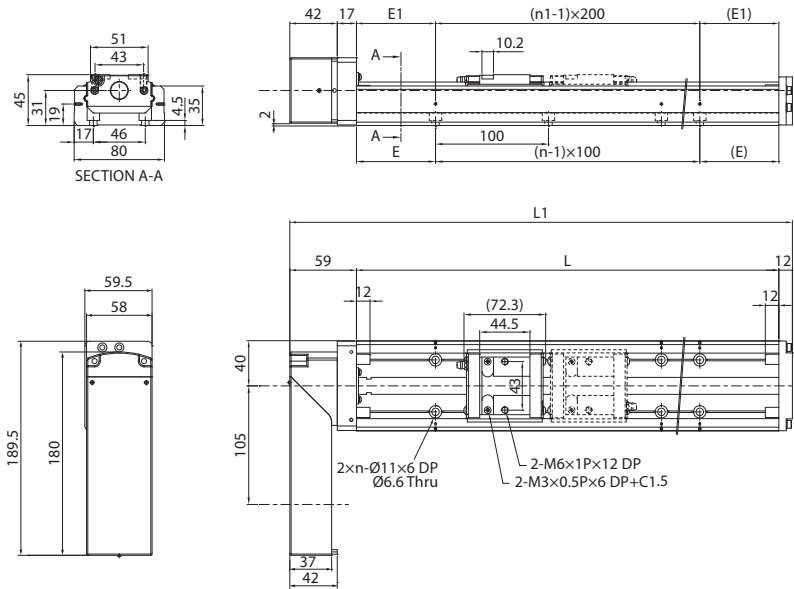
Unit: mm

Rail Length L	Overall Length L ₁	Max. Stroke		Weight (kg)	
		A Type	B Type	A Type	B Type
		340	411	208.2	100.4
440	511	308.2	200.4	8.67	10.07
540	611	408.2	300.4	9.97	11.37
640	711	508.2	400.4	11.28	12.68
740	811	608.2	500.4	12.68	14.08
840	911	708.2	600.4	13.78	15.18
940	1111	808.2	700.4	14.97	16.37

Note*: The max. stroke of B type is base on two carriage-nuts used in closed contact with each other.

KM45 Standard Type

C type : A single carriage-nut with short length
D type : Two carriage-nuts with short length



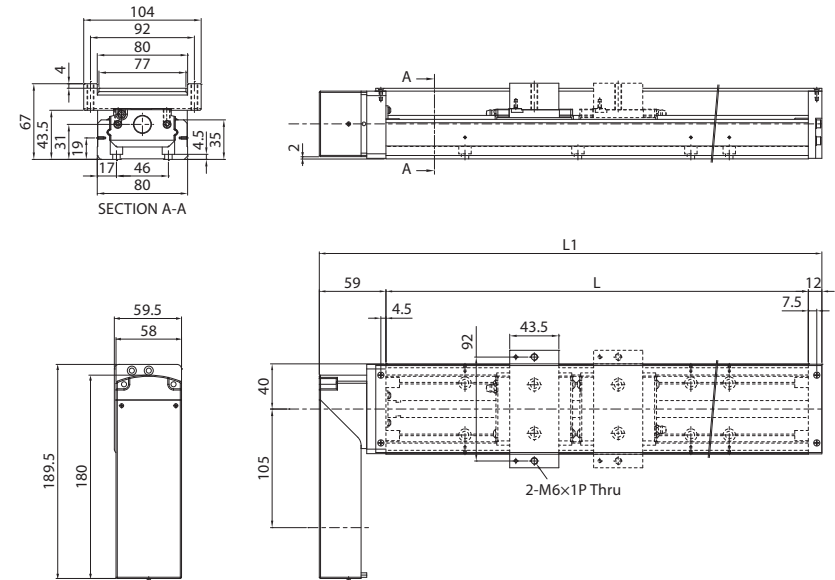
Unit: mm

Rail Length L	Overall Length L ₁	Max. Stroke		E	n	E ₁	n ₁	Weight (kg)	
		C Type	D Type					C Type	D Type
		340	411					244.7	173.4
440	511	344.7	273.4	70	4	20	3	7.67	8.47
540	611	444.7	373.4	70	5	70	3	8.97	9.77
640	711	544.7	473.4	70	6	20	4	10.28	11.08
740	811	644.7	573.4	70	7	70	4	11.68	12.48
840	911	744.7	673.4	70	8	20	5	12.78	13.58
940	1111	844.7	773.4	70	9	70	5	13.97	14.77

Note*: The max. stroke of D type is base on two carriage-nuts used in closed contact with each other.

KM45 Cover Type

C type : A single carriage-nut with short length
D type : Two carriage-nuts with short length



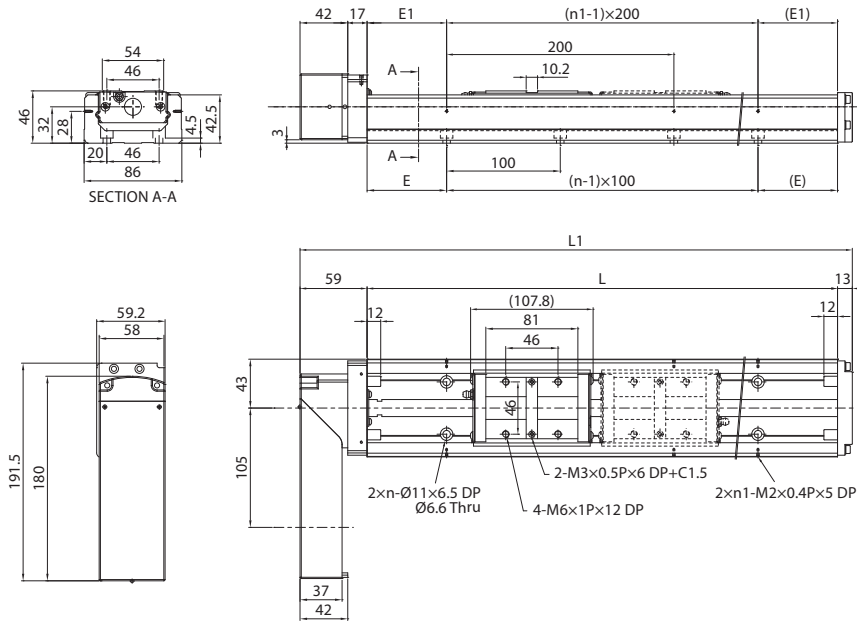
Unit: mm

Rail Length L	Overall Length L ₁	Max. Stroke		Weight (kg)	
		C Type	D Type	C Type	D Type
		340	411	244.7	173.4
440	511	344.7	273.4	7.87	8.87
540	611	444.7	373.4	9.17	10.17
640	711	544.7	473.4	10.48	11.48
740	811	644.7	573.4	11.88	12.88
840	911	744.7	673.4	12.98	13.98
940	1111	844.7	773.4	14.17	15.17

Note*: The max. stroke of D type is base on two carriage-nuts used in closed contact with each other.

KM46 Standard Type

A type : A single carriage-nut with standard length
B type : Two carriage-nuts with standard length



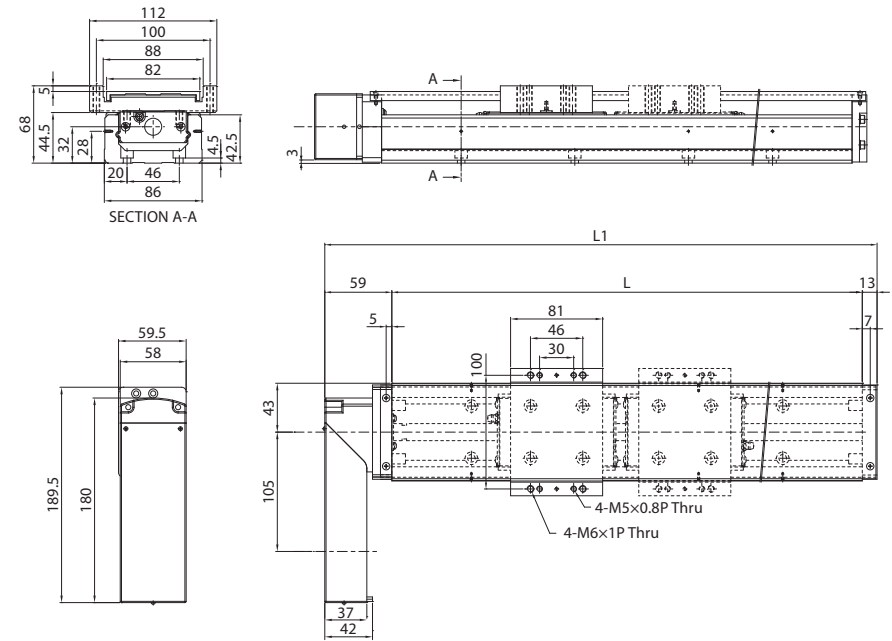
Unit: mm

Rail Length L	Overall Length L ₁	Max. Stroke		E	n	E ₁	n ₁	Weight (kg)	
		A Type	B Type					A Type	B Type
340	412	208.2	100.4	70	3	70	2	7.65	8.85
440	512	308.2	200.4	70	4	20	3	8.94	10.14
540	612	408.2	300.4	70	5	70	3	10.24	11.44
640	712	508.2	400.4	70	6	20	4	11.55	12.75
740	812	608.2	500.4	70	7	70	4	12.95	14.15
840	912	708.2	600.4	70	8	20	5	14.1	15.3
940	1112	808.2	700.4	70	9	70	5	15.24	16.44

Note*: The max. stroke of B type is base on two carriage-nuts used in closed contact with each other.

KM46 Cover Type

A type : A single carriage-nut with standard length
B type : Two carriage-nuts with standard length



Unit: mm

Rail Length L	Overall Length L ₁	Max. Stroke		Weight (kg)	
		A Type	B Type	A Type	B Type
340	412	208.2	100.4	8.25	9.65
440	512	308.2	200.4	9.54	10.94
540	612	408.2	300.4	10.84	12.24
640	712	508.2	400.4	12.15	13.55
740	812	608.2	500.4	13.55	14.95
840	912	708.2	600.4	14.65	16.05
940	1112	808.2	700.4	15.84	17.24

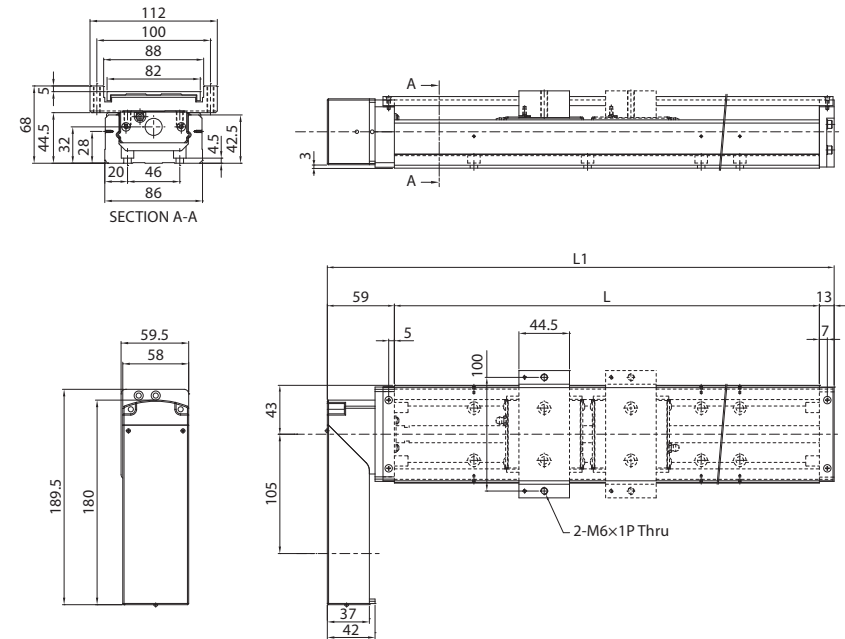
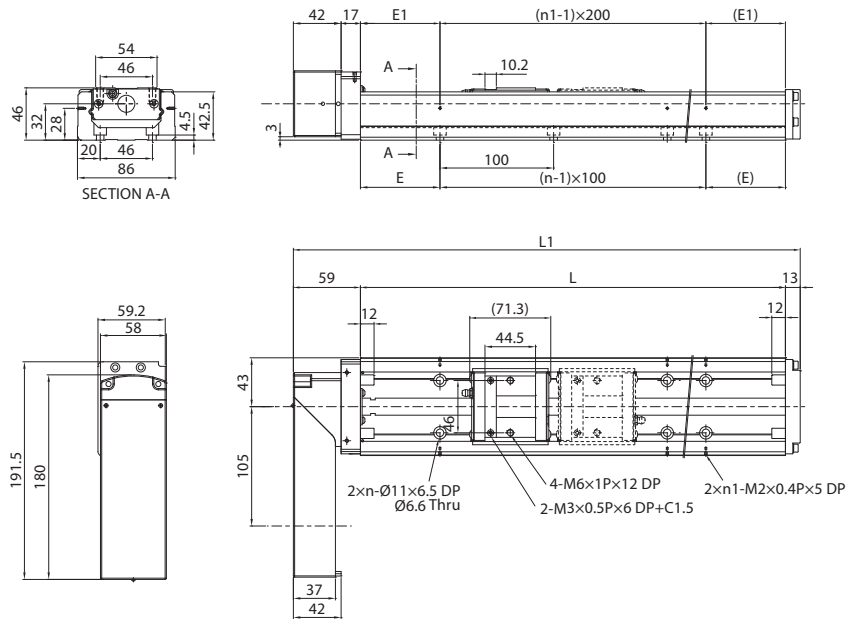
Note*: The max. stroke of B type is base on two carriage-nuts used in closed contact with each other.

KM46 Standard Type

C type : A single carriage-nut with short length
D type : Two carriage-nuts with short length

KM46 Cover Type

C type : A single carriage-nut with short length
D type : Two carriage-nuts with short length



Unit: mm

Rail Length L	Overall Length L ₁	Max. Stroke		E	n	E ₁	n ₁	Weight (kg)	
		C Type	D Type					C Type	D Type
		340	412					244.7	173.4
440	512	344.7	273.4	70	4	20	3	8.54	9.34
540	612	444.7	373.4	70	5	70	3	9.84	10.64
640	712	544.7	473.4	70	6	20	4	11.15	11.95
740	812	644.7	573.4	70	7	70	4	12.55	13.35
840	912	744.7	673.4	70	8	20	5	13.65	14.45
940	1112	844.7	773.4	70	9	70	5	14.84	15.64

Note*: The max. stroke of D type is base on two carriage-nuts used in closed contact with each other.

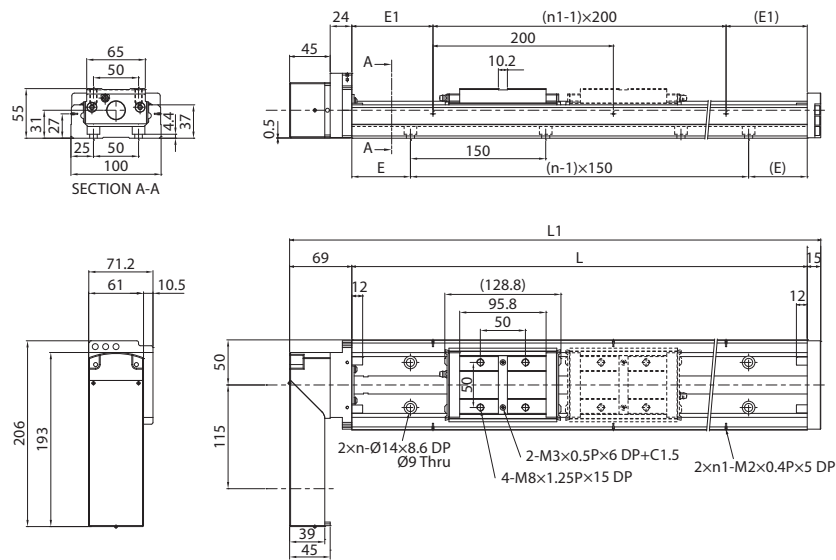
Unit: mm

Rail Length L	Overall Length L ₁	Max. Stroke		Weight (kg)	
		C Type	D Type	C Type	D Type
		340	412	244.7	173.4
440	512	344.7	273.4	8.74	9.74
540	612	444.7	373.4	10.04	11.04
640	712	544.7	473.4	11.35	12.35
740	812	644.7	573.4	12.75	13.75
840	912	744.7	673.4	13.85	14.85
940	1112	844.7	773.4	15.04	16.04

Note*: The max. stroke of D type is base on two carriage-nuts used in closed contact with each other.

KM55 Standard Type

A type : A single carriage-nut with standard length
B type : Two carriage-nuts with standard length



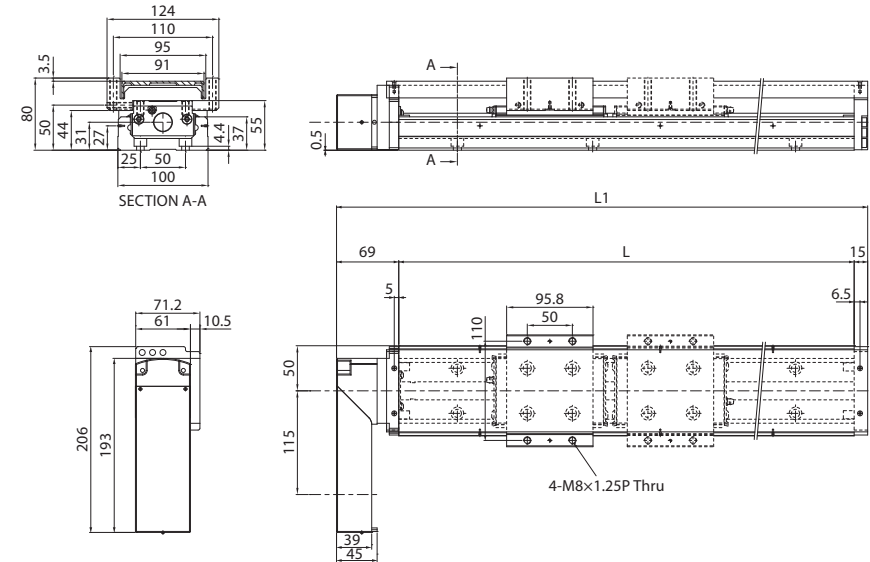
Unit: mm

Rail Length L	Overall Length L ₁	Max. Stroke		E	n	E ₁	n ₁	Weight (kg)	
		A Type	B Type					A Type	B Type
980	1064	828	699	40	7	90	5	19.90	21.62
1080	1164	928	799	15	8	40	6	21.63	23.35
1180	1264	1028	899	65	8	90	6	23.36	25.08
1280	1364	1128	999	40	9	40	7	25.09	26.81
1380	1464	1228	1099	15	10	90	7	26.82	28.54

Note*: The max. stroke of B type is base on two carriage-nuts used in closed contact with each other.

KM55 Cover Type

A type : A single carriage-nut with standard length
B type : Two carriage-nuts with standard length



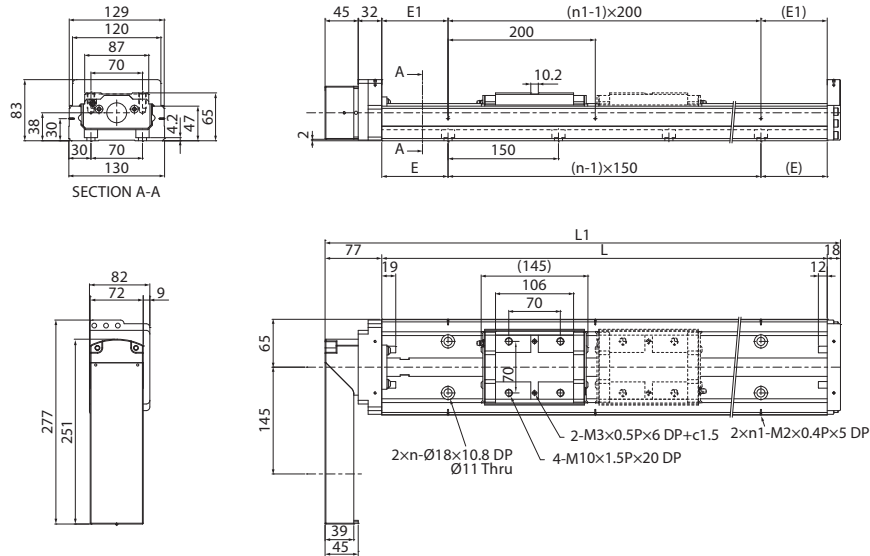
Unit: mm

Rail Length L	Overall Length L ₁	Max. Stroke		Weight (kg)	
		A Type	B Type	A Type	B Type
980	1064	828	699	21.78	24.25
1080	1164	928	799	23.61	26.08
1180	1264	1028	899	25.44	27.91
1280	1364	1128	999	27.26	29.73
1380	1464	1228	1099	29.09	31.56

Note*: The max. stroke of B type is base on two carriage-nuts used in closed contact with each other.

KM65 Standard Type

A type : A single carriage-nut with standard length
B type : Two carriage-nuts with standard length



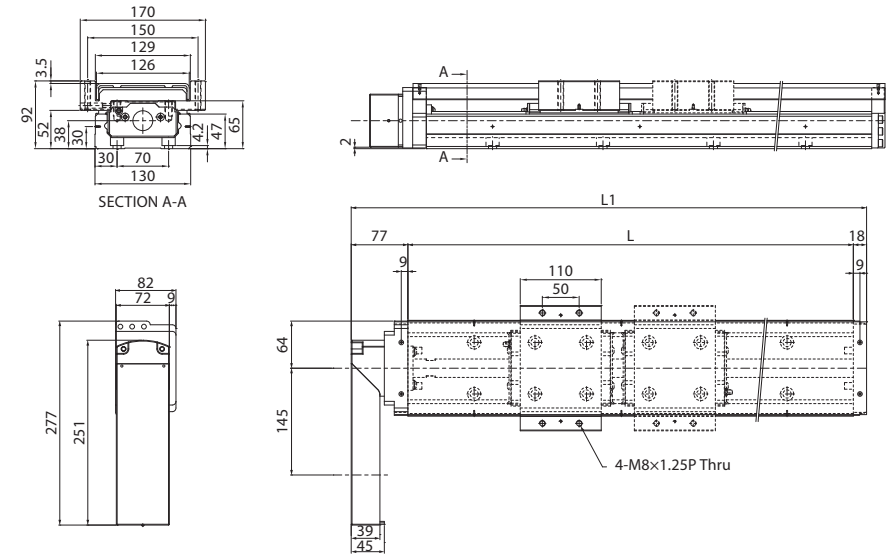
Unit: mm

Rail Length L	Overall Length L ₁	Max. Stroke		E	n	E ₁	n ₁	Weight (kg)	
		A Type	B Type					A Type	B Type
980	1075	800	655	40	7	90	5	31.60	34.60
1180	1275	1000	855	65	8	90	6	37.00	40.00
1380	1475	1200	1055	90	9	90	7	42.40	45.40
1680	1775	1500	1355	90	11	40	9	50.50	53.50

Note*: The max. stroke of B type is base on two carriage-nuts used in closed contact with each other.

KM65 Cover Type

A type : A single carriage-nut with standard length
B type : Two carriage-nuts with standard length



Unit: mm

Rail Length L	Overall Length L ₁	Max. Stroke		Weight (kg)	
		A Type	B Type	A Type	B Type
980	1075	800	655	31.60	34.60
1180	1275	1000	855	37.00	40.00
1380	1475	1200	1055	42.40	45.40
1680	1775	1500	1355	50.50	53.50

Note*: The max. stroke of B type is base on two carriage-nuts used in closed contact with each other.